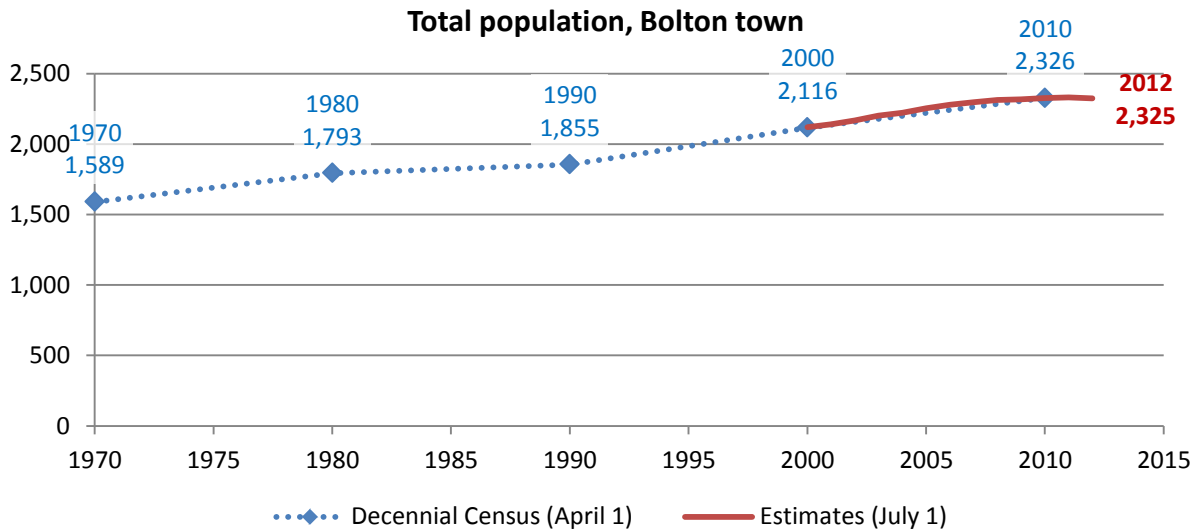


Bolton town

Total Population

Historic Decennial Census and recent annual estimates



Source: 1970-2010 Decennial Census, 2000-2010 intercensal population estimates and 2010-2012 post censal population estimates (all U.S. Census Bureau)

Change since previous Census

Change

Decennial Census	Total population	Number	Percent
1970	1,589		
1980	1,793	204	12.8%
1990	1,855	62	3.5%
2000	2,116	261	14.1%
2010	2,326	210	9.9%

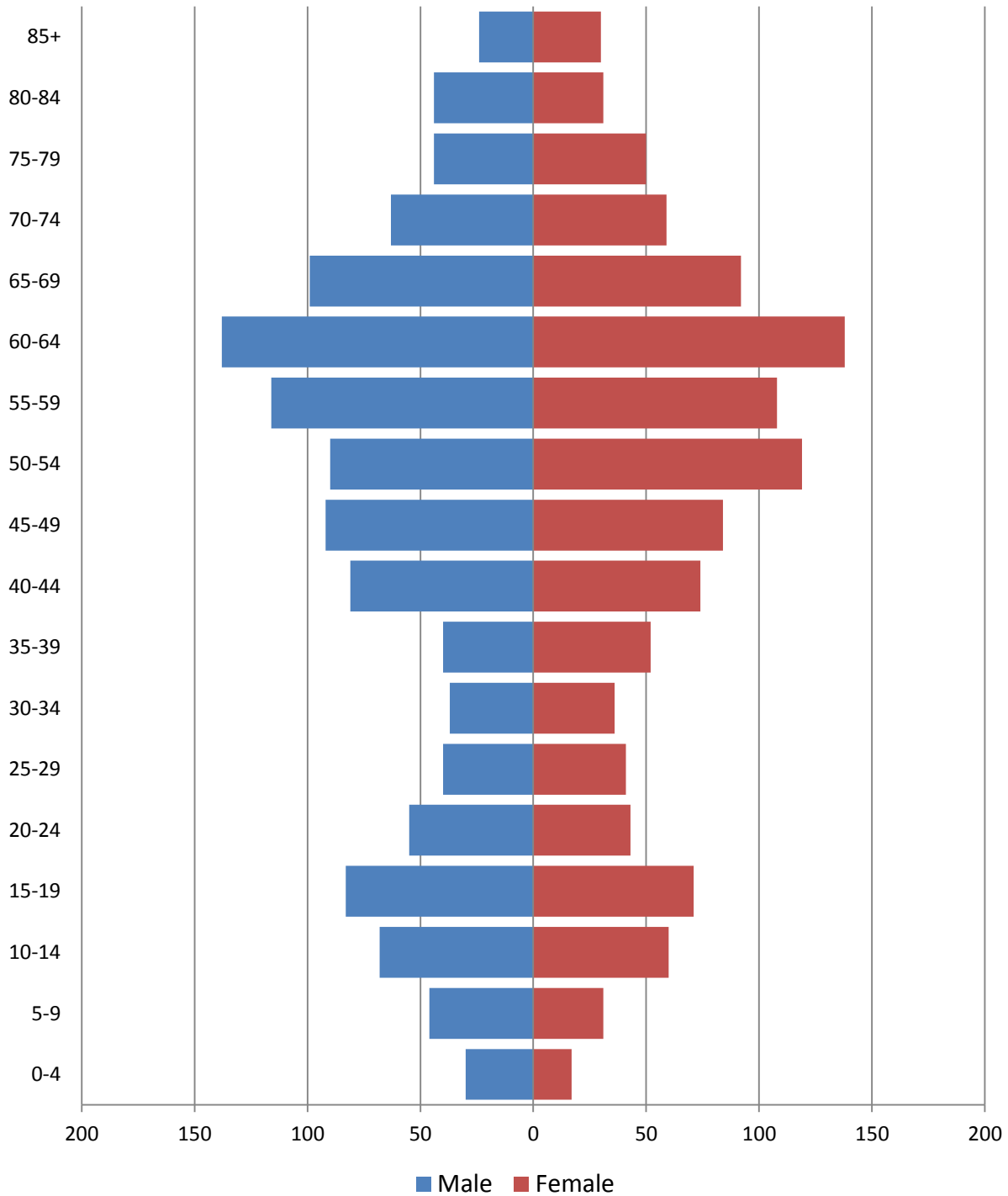
Source: 1970-2010 Decennial Census

Estimated population in 2012: 2,325. Change between April, 1 2010 and July 1, 2012: -1 (0.0%)

Population by age

2010 population pyramid

2010 Population Pyramid, Bolton town



Source: 2010 Decennial Census

Selected age groups

Age group	2000		2010		Difference	
	Count	Share	Count	Share	Count	%
Total population	2,117	100.0%	2,326	100.0%	209	9.9%
Under 5	83	3.9%	47	2.0%	-36	-43.4%
5-17	327	15.4%	300	12.9%	-27	-8.3%
18-24	93	4.4%	157	6.7%	64	68.8%
25-44	506	23.9%	401	17.2%	-105	-20.8%
45-64	697	32.9%	885	38.0%	188	27.0%
65+	411	19.4%	536	23.0%	125	30.4%
85+	37	1.7%	54	2.3%	17	45.9%
Median age	47	0.0%	52.2		0	0.0%

Source: 2000 and-2010 Decennial Census

Population by race

	Total	
	Count	Percentage
Total population	2,326	100%
Not Hispanic or Latino		
One race		
White	2,246	96.6%
Black or African American	3	0.1%
American Indian and Alaska Native	0	0.0%
Asian	9	0.4%
Native Hawaiian and Other Pacific Islander	1	0.0%
Some other race	0	0.0%
Two or more races	24	1.0%
Hispanic or Latino (of any race)	43	1.8%

Source: 2010 Decennial Census

Housing units

Characteristics

	COUNT		PERCENTAGE	
	Estimate	Margin of error	Estimate	Margin of error
HOUSING OCCUPANCY				
Total housing units	2,492	± 95	100.0%	
Occupied housing units	1,192	± 95	47.8%	± 4.0
Vacant housing units	1,300	± 123	52.2%	± 4.0
YEAR STRUCTURE BUILT				
Total housing units	2,492	± 95	100.0%	
Built 2005 or later	59	± 44	2.4%	± 1.7
Built 2000 to 2004	233	± 80	9.3%	± 3.2
Built 1990 to 1999	232	± 90	9.3%	± 3.6
Built 1980 to 1989	422	± 122	16.9%	± 4.7
Built 1970 to 1979	296	± 90	11.9%	± 3.6
Built 1960 to 1969	300	± 109	12.0%	± 4.4
Built 1950 to 1959	205	± 82	8.2%	± 3.3
Built 1940 to 1949	196	± 76	7.9%	± 3.1
Built 1939 or earlier	549	± 121	22.0%	± 4.8
HOUSING TENURE				
Occupied housing units	1,192	± 95	100.0%	
Owner-occupied	923	± 97	77.4%	± 6.4
Renter-occupied	269	± 82	22.6%	± 6.4
HOUSE HEATING FUEL				
Occupied housing units	1,192	± 95	100.0%	
Utility gas	21	± 22	1.8%	± 1.9
Bottled, tank, or LP gas	207	± 63	17.4%	± 5.1
Electricity	113	± 50	9.5%	± 4.2
Fuel oil, kerosene, etc.	740	± 113	62.1%	± 7.4
Coal or coke	0	± 89	0.0%	± 2.7
Wood	75	± 48	6.3%	± 4.1
Solar energy	0	± 89	0.0%	± 2.7
Other fuel	36	± 45	3.0%	± 3.8
No fuel used	0	± 89	0.0%	± 2.7
VALUE				
Owner-occupied units	923	± 97	100.0%	
Less than \$50,000	39	± 46	4.2%	± 4.9
\$50,000 to \$99,999	38	± 26	4.1%	± 2.7
\$100,000 to \$149,999	49	± 35	5.3%	± 3.7
\$150,000 to \$199,999	75	± 43	8.1%	± 4.6
\$200,000 to \$299,999	137	± 48	14.8%	± 5.3
\$300,000 to \$499,999	339	± 92	36.7%	± 9.5
\$500,000 to \$999,999	154	± 58	16.7%	± 6.2
\$1,000,000 or more	92	± 61	10.0%	± 6.4
Median (dollars)	359,400	± 33,644		

Source: 2007-2011 American Community Survey

Educational attainment

	COUNT		PERCENTAGE	
	Estimate	Margin of error	Estimate	Margin of error
Population 25 years and over	1,960	± 152	100%	
EDUCATIONAL ATTAINMENT				
Less than 9th grade	16	± 16	0.8%	± 0.8
9th to 12th grade, no diploma	106	± 61	5.4%	± 3.0
High school graduate (includes equivalency)	553	± 120	28.2%	± 5.7
Some college, no degree	445	± 95	22.7%	± 4.7
Associate's degree	190	± 77	9.7%	± 3.9
Bachelor's degree	472	± 114	24.1%	± 6.0
Graduate or professional degree	178	± 97	9.1%	± 4.8
Percent high school graduate or higher			93.8%	± 3.1
Percent bachelor's degree or higher			33.2%	± 6.9

Source: 2007-2011 American Community Survey

Language spoken at home

	COUNT		PERCENTAGE		SPEAK ENGLISH LESS THAN "VERY WELL"	
	Estimate	Margin of error	Estimate	Margin of error	Estimate	Margin of error
Population 5 years and over	2,362	± 204	100%			
LANGUAGE SPOKEN AT HOME						
English only	2,208	± 206	93.5%	± 3.4		
Language other than English	154	± 81	6.5%	± 3.4	2	± 4
Spanish	74	± 65	3.1%	± 2.7	2	± 4
Other Indo-European languages	80	± 60	3.4%	± 2.5	0	± 89
Asian and Pacific Islander languages	0	± 89	0.0%	± 1.4	0	± 89
Other languages	0	± 89	0.0%	± 1.4	0	± 89

Source: 2007-2011 American Community Survey

Labor Force Characteristics

Labor force, employment and unemployment

	TOTAL		IN LABOR FORCE		EMPLOYED		UNEMPLOYMENT RATE	
	Estimate	Margin of error	Estimate	Margin of error	Estimate	Margin of error	Estimate	Margin of error
Population 16 years and over	2,200	± 182	64.8%	± 4.9	61.1%	± 4.7	5.8%	± 3.6
AGE								
16 to 19 years	94	± 42	31.9%	± 31.5	17.0%	± 19.7	46.7%	± 51.4
20 to 24 years	146	± 78	93.2%	± 10.6	82.2%	± 17.5	11.8%	± 13.4
25 to 44 years	413	± 122	95.2%	± 4.8	94.9%	± 4.9	0.3%	± 1.3
45 to 54 years	575	± 129	85.0%	± 7.6	80.9%	± 6.9	4.9%	± 4.2
55 to 64 years	463	± 133	63.7%	± 12.2	59.4%	± 10.7	6.8%	± 10.7
65 to 74 years	201	± 60	31.3%	± 18.6	31.3%	± 18.6	0.0%	± 37.3
75 years and over	308	± 79	6.5%	± 5.6	4.2%	± 4.5	35.0%	± 46.5
RACE AND HISPANIC OR LATINO ORIGIN								
One race	2,200	± 182	64.8%	± 4.9	61.1%	± 4.7	5.8%	± 3.6
White	2,153	± 180	64.7%	± 5.0	60.9%	± 4.8	5.9%	± 3.7
Black or African American	45	± 40	68.9%	± 34.3	68.9%	± 34.3	0.0%	± 53.3
American Indian and Alaska Native	0	± 89	-	**	-	**	-	**
Asian	0	± 89	-	**	-	**	-	**
Pacific Islander	0	± 89	-	**	-	**	-	**
Some other race	2	± 4	100.0%	± 100.0	100.0%	± 100.0	0.0%	± 100.0
Two or more races	0	± 89	-	**	-	**	-	**
Hispanic or Latino origin (of any race)	64	± 62	100.0%	± 37.0	100.0%	± 37.0	0.0%	± 37.0
White alone, not Hispanic or Latino	2,094	± 180	63.7%	± 5.3	59.8%	± 5.2	6.1%	± 3.9
SEX								
Population 20 to 64 years	1,597	± 173	82.2%	± 5.3	78.4%	± 5.2	4.6%	± 3.1
Male	783	± 99	80.1%	± 8.9	76.8%	± 8.7	4.1%	± 3.7
Female	814	± 114	84.3%	± 6.5	80.0%	± 7.5	5.1%	± 5.2
With own children under 6 years	96	± 49	100.0%	± 28.0	100.0%	± 28.0	0.0%	± 28.0
EDUCATIONAL ATTAINMENT								
Population 25 to 64 years	1,451	± 140	81.1%	± 5.9	78.0%	± 5.5	3.8%	± 3.1
Less than high school graduate	73	± 48	87.7%	± 20.1	87.7%	± 20.1	0.0%	± 37.0
High school graduate (includes equivalency)	333	± 108	62.2%	± 14.5	58.6%	± 14.6	5.8%	± 8.3
Some college or associate's degree	534	± 100	81.8%	± 9.2	80.3%	± 9.5	1.8%	± 2.8
Bachelor's degree or higher	511	± 125	91.8%	± 6.3	86.9%	± 8.7	5.3%	± 6.8

Table formula: **LABOR FORCE** = # EMPLOYED + # UNEMPLOYED
% IN LABOR FORCE = LABOR FORCE / TOTAL * 100%
% EMPLOYED = # EMPLOYED / TOTAL * 100%
UNEMPLOYMENT RATE = # UNEMPLOYED / LABOR FORCE * 100%

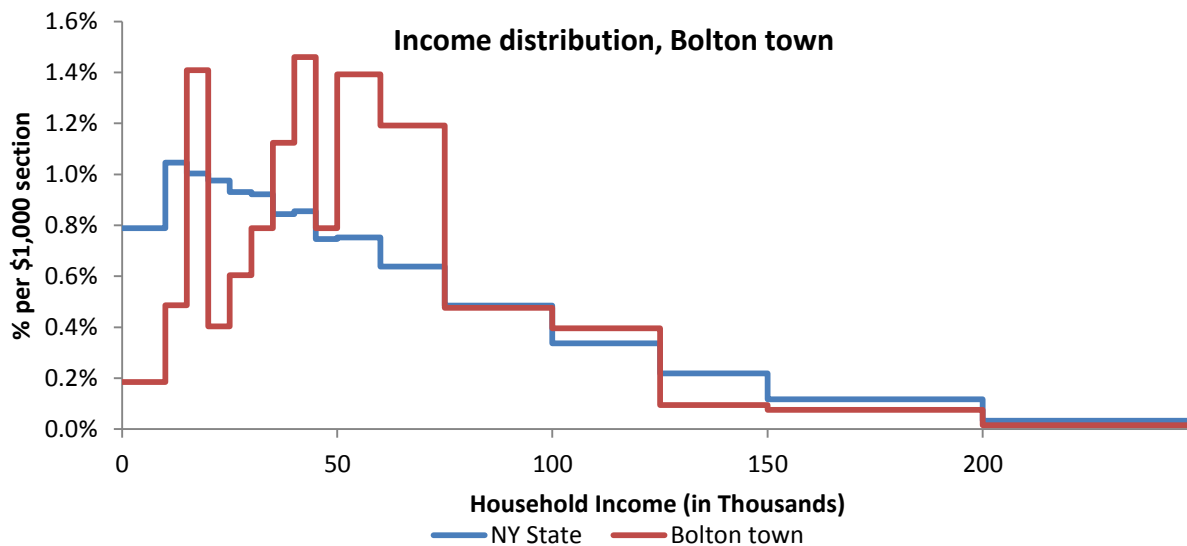
Source: 2007-2011 American Community Survey

Household Income

Distribution

	Estimate	Margin of error	Interval width (in \$1,000)	Est. per \$1,000 section
Total:	1,192	± 95		
Less than \$10,000	22	± 23	10	2.2
\$10,000 to \$14,999	29	± 22	5	5.8
\$15,000 to \$19,999	84	± 48	5	16.8
\$20,000 to \$24,999	24	± 17	5	4.8
\$25,000 to \$29,999	36	± 36	5	7.2
\$30,000 to \$34,999	47	± 44	5	9.4
\$35,000 to \$39,999	67	± 51	5	13.4
\$40,000 to \$44,999	87	± 56	5	17.4
\$45,000 to \$49,999	47	± 35	5	9.4
\$50,000 to \$59,999	166	± 59	10	16.6
\$60,000 to \$74,999	213	± 87	15	14.2
\$75,000 to \$99,999	142	± 62	25	5.7
\$100,000 to \$124,999	118	± 62	25	4.7
\$125,000 to \$149,999	28	± 21	25	1.1
\$150,000 to \$199,999	45	± 35	50	0.9
\$200,000 or more	37	± 31	-	-

Source: 2007-2011 American Community Survey



Source: 2007-2011 American Community Survey

Poverty

Poverty characteristics

	TOTAL		BELOW POVERTY LEVEL		PERCENT BELOW POVERTY LEVEL	
	Estimate	Margin of error	Estimate	Margin of error	Estimate	Margin of error
Population for whom poverty status is determined	2,532	± 211	126	± 75	5.0%	± 2.9
AGE						
Under 18 years	406	± 137	18	± 20	4.4%	± 4.8
Related children under 18 years	398	± 136	10	± 16	2.5%	± 4.1
18 to 64 years	1,617	± 170	88	± 52	5.4%	± 3.1
65 years and over	509	± 97	20	± 25	3.9%	± 4.8
SEX						
Male	1,279	± 122	45	± 35	3.5%	± 2.8
Female	1,253	± 160	81	± 53	6.5%	± 4.2
RACE AND HISPANIC OR LATINO ORIGIN						
One race	2,532	± 211	126	± 75	5.0%	± 2.9
White	2,465	± 212	117	± 74	4.7%	± 2.9
Black or African American	65	± 52	9	± 14	13.8%	± 23.1
American Indian and Alaska Native	0	± 89	0	± 89	-%	± **
Asian	0	± 89	0	± 89	-%	± **
Hispanic or Latino origin (of any race)	158	± 161	0	± 89	0.0%	± 18.5
White alone, not Hispanic or Latino	2,312	± 196	117	± 74	5.1%	± 3.2
EDUCATIONAL ATTAINMENT						
Population 25 years and over	1,960	± 152	95	± 59	4.8%	± 3.0
Less than high school graduate	122	± 63	7	± 11	5.7%	± 9.1
High school graduate (includes equivalency)	553	± 120	21	± 20	3.8%	± 3.4
Some college, associate's degree	635	± 109	35	± 47	5.5%	± 7.4
Bachelor's degree or higher	650	± 141	32	± 29	4.9%	± 4.7
EMPLOYMENT STATUS						
Civilian labor force 16 years and over	1,426	± 149	49	± 34	3.4%	± 2.4
Employed	1,344	± 148	49	± 34	3.6%	± 2.6
Male	647	± 105	7	± 11	1.1%	± 1.7
Female	697	± 123	42	± 33	6.0%	± 4.8
Unemployed	82	± 52	0	± 89	0.0%	± 31.5
Male	34	± 25	0	± 89	0.0%	± 50.9
Female	48	± 41	0	± 89	0.0%	± 42.8
WORK EXPERIENCE IN THE PAST 12 MONTHS						
Population 16 years and over	2,200	± 182	116	± 65	5.3%	± 2.9
Worked full-time, year-round	892	± 150	6	± 10	0.7%	± 1.1
Worked part-time or part-year	640	± 113	70	± 42	10.9%	± 6.1
Did not work	668	± 112	40	± 43	6.0%	± 6.3

Source: 2007-2011 American Community Survey