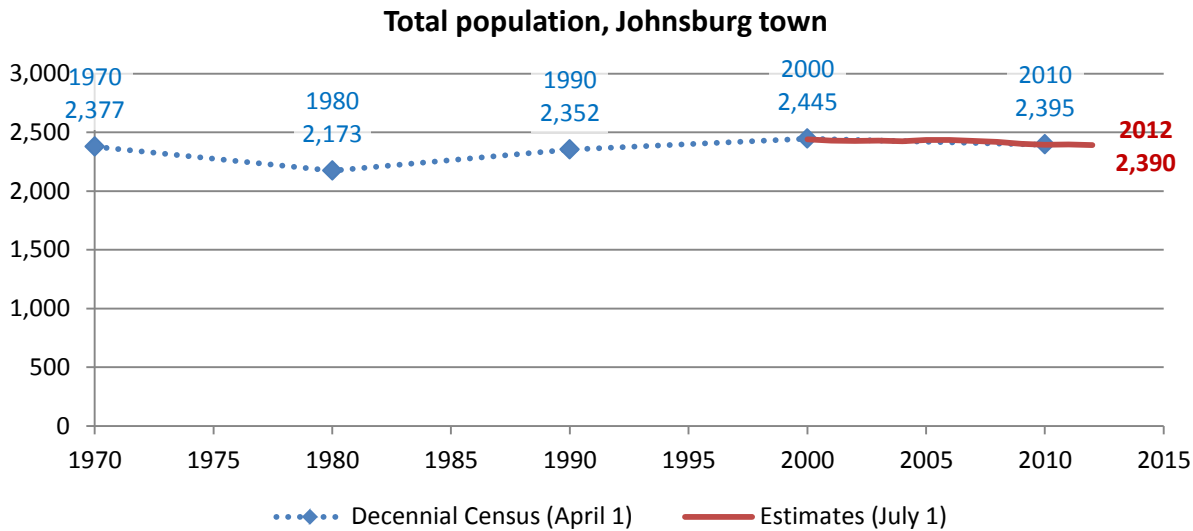


Johnsburg town

Total Population

Historic Decennial Census and recent annual estimates



Source: 1970-2010 Decennial Census, 2000-2010 intercensal population estimates and 2010-2012 post censal population estimates (all U.S. Census Bureau)

Change since previous Census

Change

Decennial Census	Total population	Number	Percent
1970	2,377		
1980	2,173	-204	-8.6%
1990	2,352	179	8.2%
2000	2,445	93	4.0%
2010	2,395	-50	-2.0%

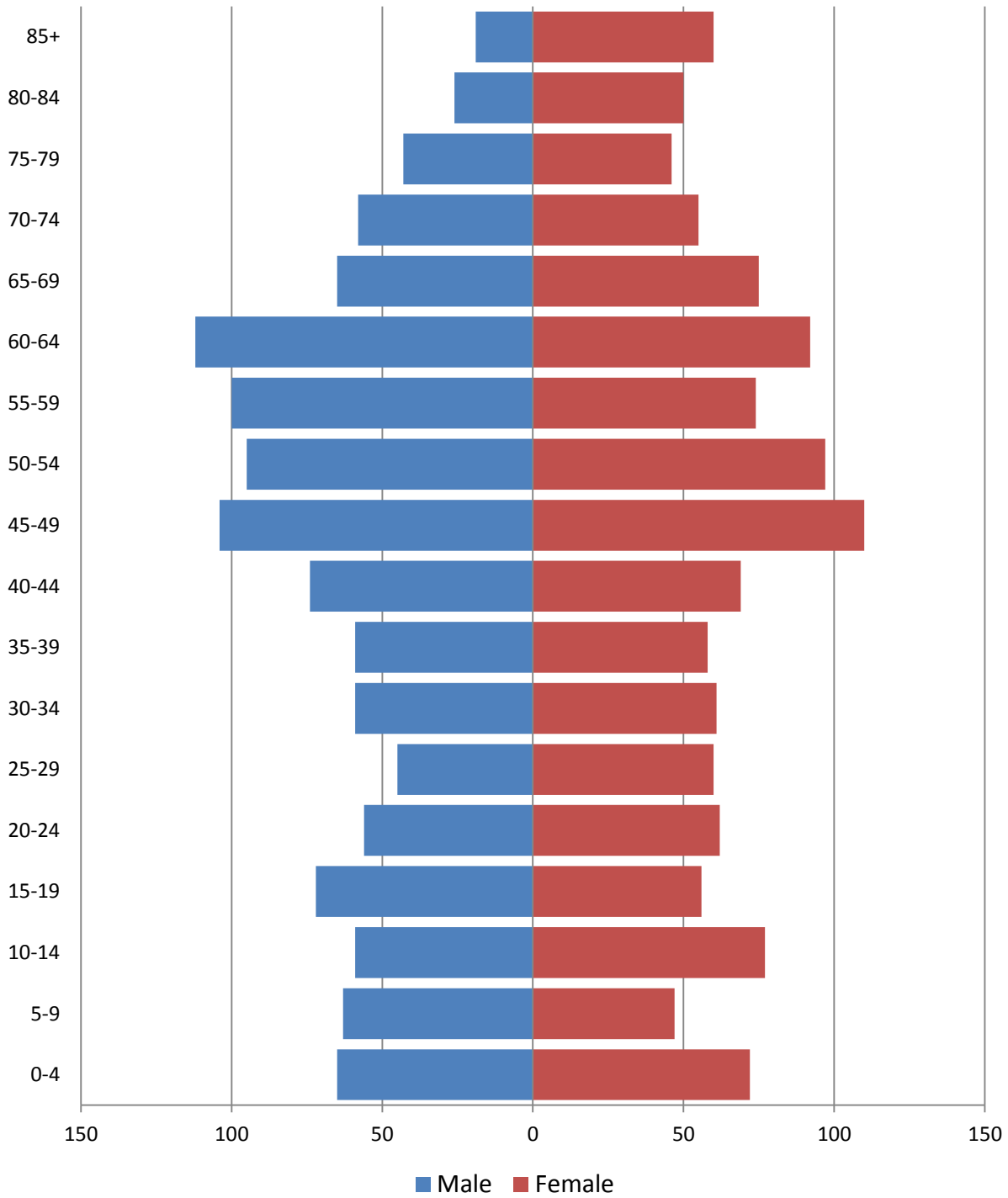
Source: 1970-2010 Decennial Census

Estimated population in 2012: 2,390. Change between April, 1 2010 and July 1, 2012: -5 (-0.2%)

Population by age

2010 population pyramid

2010 Population Pyramid, Johnsburg town



Source: 2010 Decennial Census

Selected age groups

Age group	2000		2010		Difference	
	Count	Share	Count	Share	Count	%
Total population	2,450	100.0%	2,395	100.0%	-55	-2.2%
Under 5	113	4.6%	137	5.7%	24	21.2%
5-17	413	16.9%	340	14.2%	-73	-17.7%
18-24	171	7.0%	152	6.3%	-19	-11.1%
25-44	657	26.8%	485	20.3%	-172	-26.2%
45-64	635	25.9%	784	32.7%	149	23.5%
65+	461	18.8%	497	20.8%	36	7.8%
85+	85	3.5%	79	3.3%	-6	-7.1%
Median age	41	0.0%	46.8		0	0.0%

Source: 2000 and-2010 Decennial Census

Population by race

	Total	
	Count	Percentage
Total population	2,395	100%
Not Hispanic or Latino		
One race		
White	2,328	97.2%
Black or African American	7	0.3%
American Indian and Alaska Native	7	0.3%
Asian	6	0.3%
Native Hawaiian and Other Pacific Islander	0	0.0%
Some other race	4	0.2%
Two or more races	10	0.4%
Hispanic or Latino (of any race)	33	1.4%

Source: 2010 Decennial Census

Housing units

Characteristics

	COUNT		PERCENTAGE	
	Estimate	Margin of error	Estimate	Margin of error
HOUSING OCCUPANCY				
Total housing units	2,004	± 70	100.0%	
Occupied housing units	886	± 114	44.2%	± 5.4
Vacant housing units	1,118	± 114	55.8%	± 5.4
YEAR STRUCTURE BUILT				
Total housing units	2,004	± 70	100.0%	
Built 2005 or later	25	± 29	1.2%	± 1.4
Built 2000 to 2004	83	± 51	4.1%	± 2.6
Built 1990 to 1999	215	± 94	10.7%	± 4.7
Built 1980 to 1989	368	± 117	18.4%	± 5.7
Built 1970 to 1979	149	± 65	7.4%	± 3.3
Built 1960 to 1969	230	± 87	11.5%	± 4.3
Built 1950 to 1959	140	± 60	7.0%	± 3.0
Built 1940 to 1949	175	± 77	8.7%	± 3.9
Built 1939 or earlier	619	± 126	30.9%	± 6.2
HOUSING TENURE				
Occupied housing units	886	± 114	100.0%	
Owner-occupied	680	± 118	76.7%	± 7.0
Renter-occupied	206	± 61	23.3%	± 7.0
HOUSE HEATING FUEL				
Occupied housing units	886	± 114	100.0%	
Utility gas	7	± 11	0.8%	± 1.2
Bottled, tank, or LP gas	71	± 40	8.0%	± 4.7
Electricity	89	± 35	10.0%	± 4.2
Fuel oil, kerosene, etc.	470	± 111	53.0%	± 9.2
Coal or coke	0	± 89	0.0%	± 3.6
Wood	218	± 76	24.6%	± 7.7
Solar energy	23	± 36	2.6%	± 4.1
Other fuel	8	± 12	0.9%	± 1.4
No fuel used	0	± 89	0.0%	± 3.6
VALUE				
Owner-occupied units	680	± 118	100.0%	
Less than \$50,000	57	± 47	8.4%	± 6.9
\$50,000 to \$99,999	140	± 71	20.6%	± 9.6
\$100,000 to \$149,999	82	± 43	12.1%	± 6.4
\$150,000 to \$199,999	166	± 76	24.4%	± 9.4
\$200,000 to \$299,999	106	± 52	15.6%	± 7.6
\$300,000 to \$499,999	104	± 50	15.3%	± 7.2
\$500,000 to \$999,999	17	± 21	2.5%	± 3.1
\$1,000,000 or more	8	± 11	1.2%	± 1.6
Median (dollars)	166,900	± 18,866		

Source: 2007-2011 American Community Survey

Educational attainment

	COUNT		PERCENTAGE	
	Estimate	Margin of error	Estimate	Margin of error
Population 25 years and over	1,531	± 214	100%	
EDUCATIONAL ATTAINMENT				
Less than 9th grade	107	± 53	7.0%	± 3.5
9th to 12th grade, no diploma	204	± 87	13.3%	± 5.3
High school graduate (includes equivalency)	597	± 154	39.0%	± 7.5
Some college, no degree	218	± 73	14.2%	± 4.5
Associate's degree	49	± 26	3.2%	± 1.6
Bachelor's degree	177	± 72	11.6%	± 4.4
Graduate or professional degree	179	± 82	11.7%	± 5.2
Percent high school graduate or higher			79.7%	± 5.4
Percent bachelor's degree or higher			23.3%	± 6.0

Source: 2007-2011 American Community Survey

Language spoken at home

	COUNT		PERCENTAGE		SPEAK ENGLISH LESS THAN "VERY WELL"	
	Estimate	Margin of error	Estimate	Margin of error	Estimate	Margin of error
Population 5 years and over	1,778	± 237	100%			
LANGUAGE SPOKEN AT HOME						
English only	1,698	± 221	95.5%	± 3.3		
Language other than English	80	± 63	4.5%	± 3.3	2	± 4
Spanish	2	± 4	0.1%	± 0.2	2	± 4
Other Indo-European languages	71	± 62	4.0%	± 3.3	0	± 89
Asian and Pacific Islander languages	7	± 11	0.4%	± 0.6	0	± 89
Other languages	0	± 89	0.0%	± 1.8	0	± 89

Source: 2007-2011 American Community Survey

Labor Force Characteristics

Labor force, employment and unemployment

	TOTAL		IN LABOR FORCE		EMPLOYED		UNEMPLOYMENT RATE	
	Estimate	Margin of error	Estimate	Margin of error	Estimate	Margin of error	Estimate	Margin of error
Population 16 years and over	1,688	± 221	50.0%	± 8.5	45.9%	± 7.7	8.3%	± 5.4
AGE								
16 to 19 years	73	± 53	67.1%	± 21.9	56.2%	± 31.8	16.3%	± 26.4
20 to 24 years	84	± 34	61.9%	± 28.5	48.8%	± 27.3	21.2%	± 31.9
25 to 44 years	367	± 118	80.9%	± 13.0	73.8%	± 13.6	8.8%	± 10.6
45 to 54 years	246	± 88	85.4%	± 13.7	78.0%	± 14.4	8.6%	± 8.9
55 to 64 years	377	± 99	60.5%	± 12.2	58.6%	± 12.6	3.1%	± 4.5
65 to 74 years	239	± 95	3.3%	± 4.7	3.3%	± 4.7	0.0%	± 100.0
75 years and over	302	± 123	0.0%	± 10.2	0.0%	± 10.2	-	**
RACE AND HISPANIC OR LATINO ORIGIN								
One race	1,688	± 221	50.0%	± 8.5	45.9%	± 7.7	8.3%	± 5.4
White	1,680	± 219	50.2%	± 8.5	46.1%	± 7.7	8.3%	± 5.4
Black or African American	1	± 5	0.0%	± 100.0	0.0%	± 100.0	-	**
American Indian and Alaska Native	0	± 89	-	**	-	**	-	**
Asian	7	± 11	0.0%	± 100.0	0.0%	± 100.0	-	**
Pacific Islander	0	± 89	-	**	-	**	-	**
Some other race	0	± 89	-	**	-	**	-	**
Two or more races	0	± 89	-	**	-	**	-	**
Hispanic or Latino origin (of any race)	10	± 16	80.0%	± 44.6	0.0%	± 93.8	100.0%	± 100.0
White alone, not Hispanic or Latino	1,670	± 218	50.1%	± 8.5	46.3%	± 7.8	7.4%	± 5.0
SEX								
Population 20 to 64 years	1,074	± 200	73.3%	± 7.5	67.5%	± 6.9	7.9%	± 5.2
Male	558	± 104	86.6%	± 6.4	83.7%	± 7.5	3.3%	± 3.6
Female	516	± 110	58.9%	± 12.3	50.0%	± 11.3	15.1%	± 12.7
With own children under 6 years	54	± 50	100.0%	± 40.4	37.0%	± 39.3	63.0%	± 39.3
EDUCATIONAL ATTAINMENT								
Population 25 to 64 years	990	± 201	74.2%	± 7.4	69.1%	± 7.3	6.9%	± 5.2
Less than high school graduate	94	± 59	71.3%	± 24.3	71.3%	± 24.3	0.0%	± 36.0
High school graduate (includes equivalency)	392	± 147	68.6%	± 11.1	64.0%	± 11.3	6.7%	± 7.5
Some college or associate's degree	203	± 66	90.6%	± 9.0	85.7%	± 11.5	5.4%	± 6.6
Bachelor's degree or higher	301	± 96	71.4%	± 16.0	63.8%	± 17.3	10.7%	± 15.7

Table formula:
LABOR FORCE = # EMPLOYED + # UNEMPLOYED
% IN LABOR FORCE = LABOR FORCE / TOTAL * 100%
% EMPLOYED = # EMPLOYED / TOTAL * 100%
UNEMPLOYMENT RATE = # UNEMPLOYED / LABOR FORCE * 100%

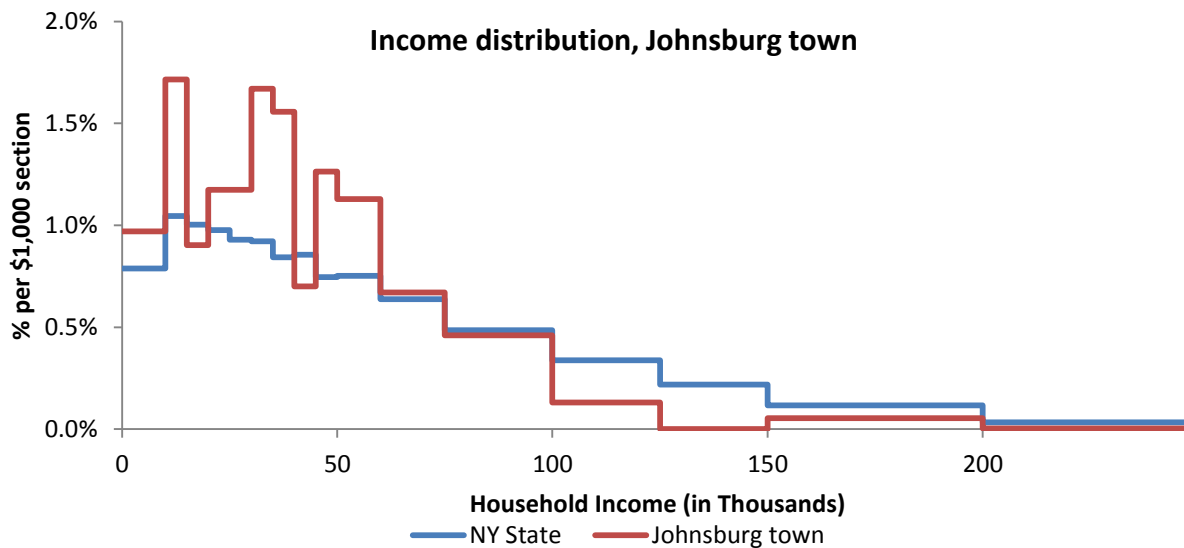
Source: 2007-2011 American Community Survey

Household Income

Distribution

	Estimate	Margin of error	Interval width (in \$1,000)	Est. per \$1,000 section
Total:	886	± 114		
Less than \$10,000	86	± 57	10	8.6
\$10,000 to \$14,999	76	± 48	5	15.2
\$15,000 to \$19,999	40	± 39	5	8.0
\$20,000 to \$24,999	52	± 38	5	10.4
\$25,000 to \$29,999	52	± 42	5	10.4
\$30,000 to \$34,999	74	± 43	5	14.8
\$35,000 to \$39,999	69	± 54	5	13.8
\$40,000 to \$44,999	31	± 25	5	6.2
\$45,000 to \$49,999	56	± 46	5	11.2
\$50,000 to \$59,999	100	± 53	10	10.0
\$60,000 to \$74,999	89	± 62	15	5.9
\$75,000 to \$99,999	102	± 50	25	4.1
\$100,000 to \$124,999	29	± 31	25	1.2
\$125,000 to \$149,999	0	± 89	25	0.0
\$150,000 to \$199,999	24	± 28	50	0.5
\$200,000 or more	6	± 10	-	-

Source: 2007-2011 American Community Survey



Source: 2007-2011 American Community Survey

Poverty

Poverty characteristics

	TOTAL		BELOW POVERTY LEVEL		PERCENT BELOW POVERTY LEVEL	
	Estimate	Margin of error	Estimate	Margin of error	Estimate	Margin of error
Population for whom poverty status is determined	1,831	± 231	193	± 99	10.5%	± 5.5
AGE						
Under 18 years	271	± 84	22	± 36	8.1%	± 13.0
Related children under 18 years	271	± 84	22	± 36	8.1%	± 13.0
18 to 64 years	1,099	± 198	124	± 79	11.3%	± 7.0
65 years and over	461	± 126	47	± 38	10.2%	± 9.0
SEX						
Male	893	± 134	65	± 45	7.3%	± 4.9
Female	938	± 148	128	± 73	13.6%	± 7.7
RACE AND HISPANIC OR LATINO ORIGIN						
One race	1,831	± 231	193	± 99	10.5%	± 5.5
White	1,823	± 229	192	± 100	10.5%	± 5.6
Black or African American	1	± 5	1	± 5	100.0%	± 100.0
American Indian and Alaska Native	0	± 89	0	± 89	-%	± **
Asian	7	± 11	0	± 89	0.0%	± 100.0
Hispanic or Latino origin (of any race)	8	± 16	0	± 89	0.0%	± 100.0
White alone, not Hispanic or Latino	1,815	± 229	192	± 100	10.6%	± 5.6
EDUCATIONAL ATTAINMENT						
Population 25 years and over	1,447	± 197	152	± 87	10.5%	± 6.0
Less than high school graduate	275	± 80	74	± 52	26.9%	± 17.7
High school graduate (includes equivalency)	559	± 152	35	± 38	6.3%	± 6.7
Some college, associate's degree	263	± 84	14	± 15	5.3%	± 6.4
Bachelor's degree or higher	350	± 102	29	± 27	8.3%	± 7.8
EMPLOYMENT STATUS						
Civilian labor force 16 years and over	844	± 186	56	± 43	6.6%	± 5.2
Employed	774	± 165	49	± 41	6.3%	± 5.4
Male	504	± 104	37	± 38	7.3%	± 7.4
Female	270	± 85	12	± 18	4.4%	± 6.4
Unemployed	70	± 52	7	± 10	10.0%	± 14.8
Male	24	± 23	7	± 10	29.2%	± 37.5
Female	46	± 45	0	± 89	0.0%	± 43.7
WORK EXPERIENCE IN THE PAST 12 MONTHS						
Population 16 years and over	1,604	± 205	171	± 88	10.7%	± 5.6
Worked full-time, year-round	571	± 140	41	± 40	7.2%	± 6.9
Worked part-time or part-year	267	± 100	15	± 16	5.6%	± 6.2
Did not work	766	± 151	115	± 60	15.0%	± 7.8

Source: 2007-2011 American Community Survey