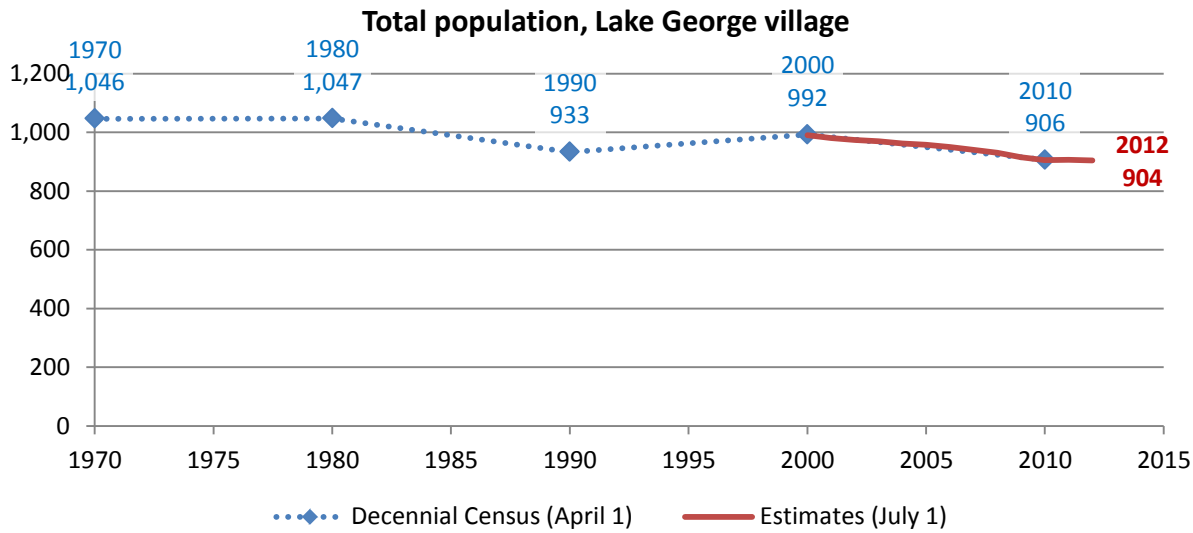


Lake George village

Total Population

Historic Decennial Census and recent annual estimates



Source: 1970-2010 Decennial Census, 2000-2010 intercensal population estimates and 2010-2012 post censal population estimates (all U.S. Census Bureau)

Change since previous Census

Change

Decennial Census	Total population	Number	Percent
1970	1,046		
1980	1,047	1	0.1%
1990	933	-114	-10.9%
2000	992	59	6.3%
2010	906	-86	-8.7%

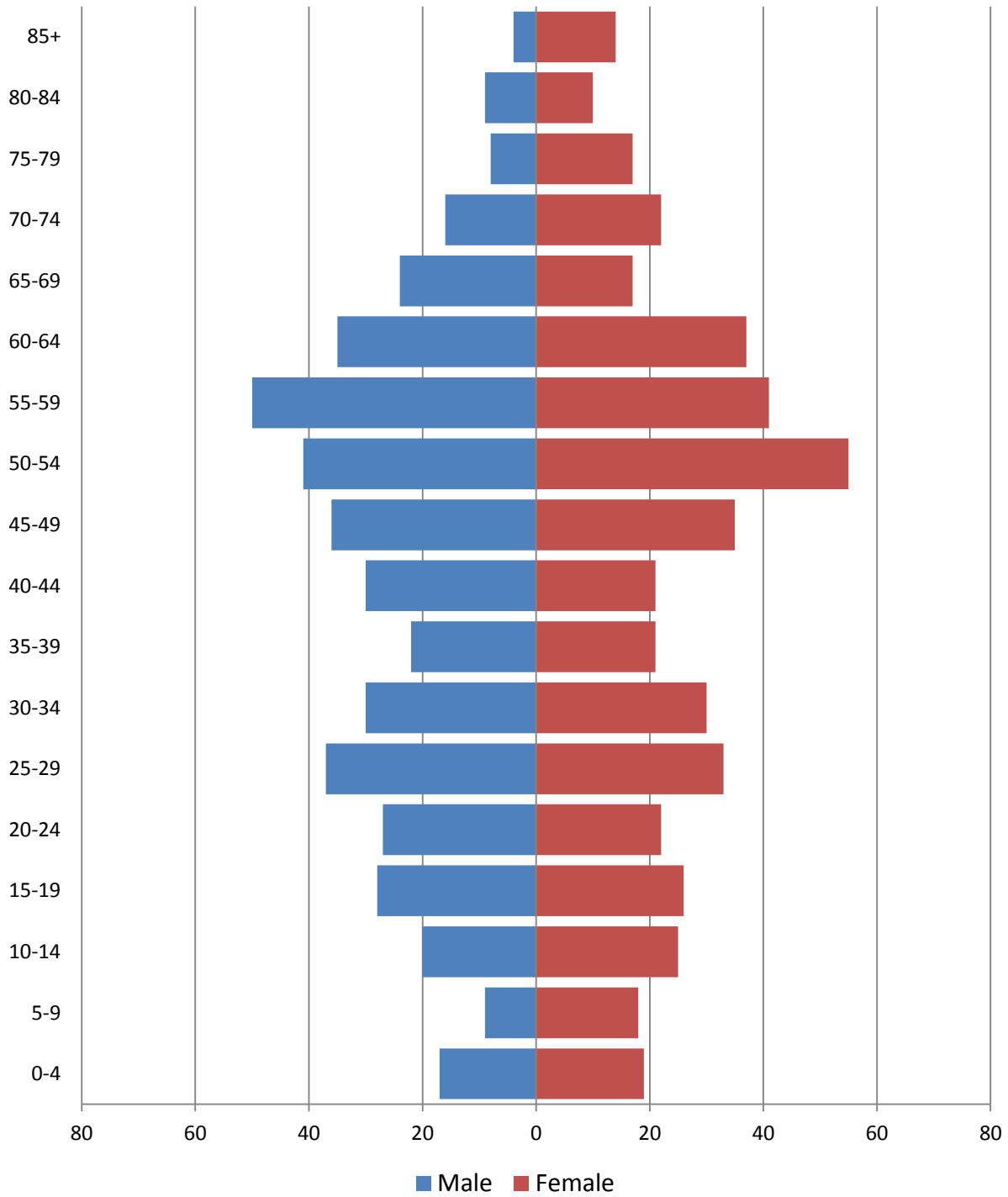
Source: 1970-2010 Decennial Census

Estimated population in 2012: 904. Change between April, 1 2010 and July 1, 2012: -2 (-0.2%)

Population by age

2010 population pyramid

2010 Population Pyramid, Lake George village



Source: 2010 Decennial Census

Selected age groups

Age group	2000		2010		Difference	
	Count	Share	Count	Share	Count	%
Total population	985	100.0%	906	100.0%	-79	-8.0%
Under 5	42	4.3%	36	4.0%	-6	-14.3%
5-17	180	18.3%	101	11.1%	-79	-43.9%
18-24	84	8.5%	74	8.2%	-10	-11.9%
25-44	280	28.4%	224	24.7%	-56	-20.0%
45-64	262	26.6%	330	36.4%	68	26.0%
65+	137	13.9%	141	15.6%	4	2.9%
85+	13	1.3%	18	2.0%	5	38.5%
Median age	40	0.0%	46.6		0	0.0%

Source: 2000 and-2010 Decennial Census

Population by race

	Total	
	Count	Percentage
Total population	906	100%
Not Hispanic or Latino		
One race		
White	862	95.1%
Black or African American	4	0.4%
American Indian and Alaska Native	0	0.0%
Asian	10	1.1%
Native Hawaiian and Other Pacific Islander	0	0.0%
Some other race	0	0.0%
Two or more races	12	1.3%
Hispanic or Latino (of any race)	18	2.0%

Source: 2010 Decennial Census