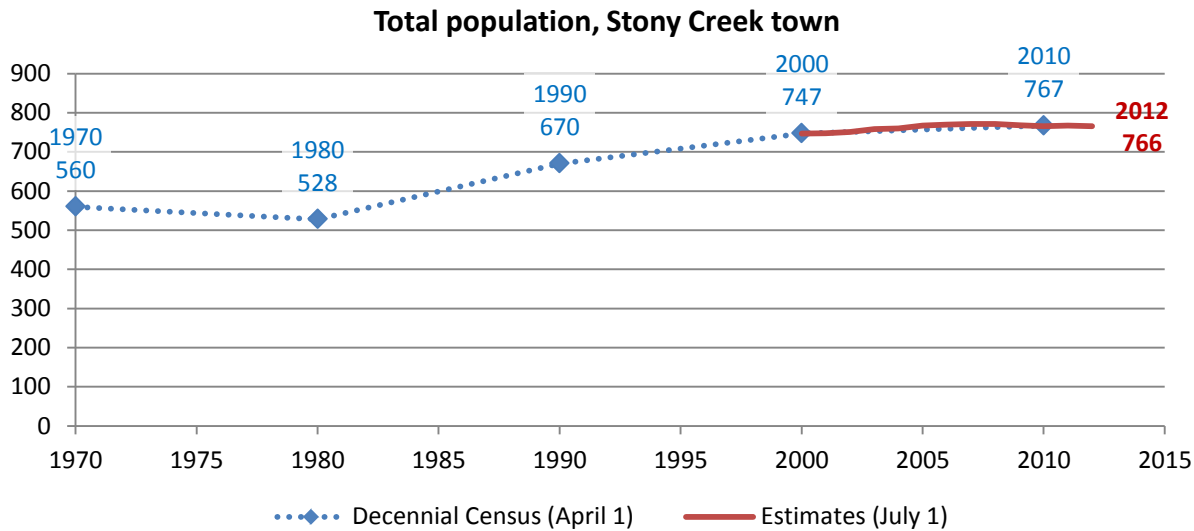


Stony Creek town

Total Population

Historic Decennial Census and recent annual estimates



Source: 1970-2010 Decennial Census, 2000-2010 intercensal population estimates and 2010-2012 post censal population estimates (all U.S. Census Bureau)

Change since previous Census

Change

Decennial Census	Total population	Number	Percent
1970	560		
1980	528	-32	-5.7%
1990	670	142	26.9%
2000	747	77	11.5%
2010	767	20	2.7%

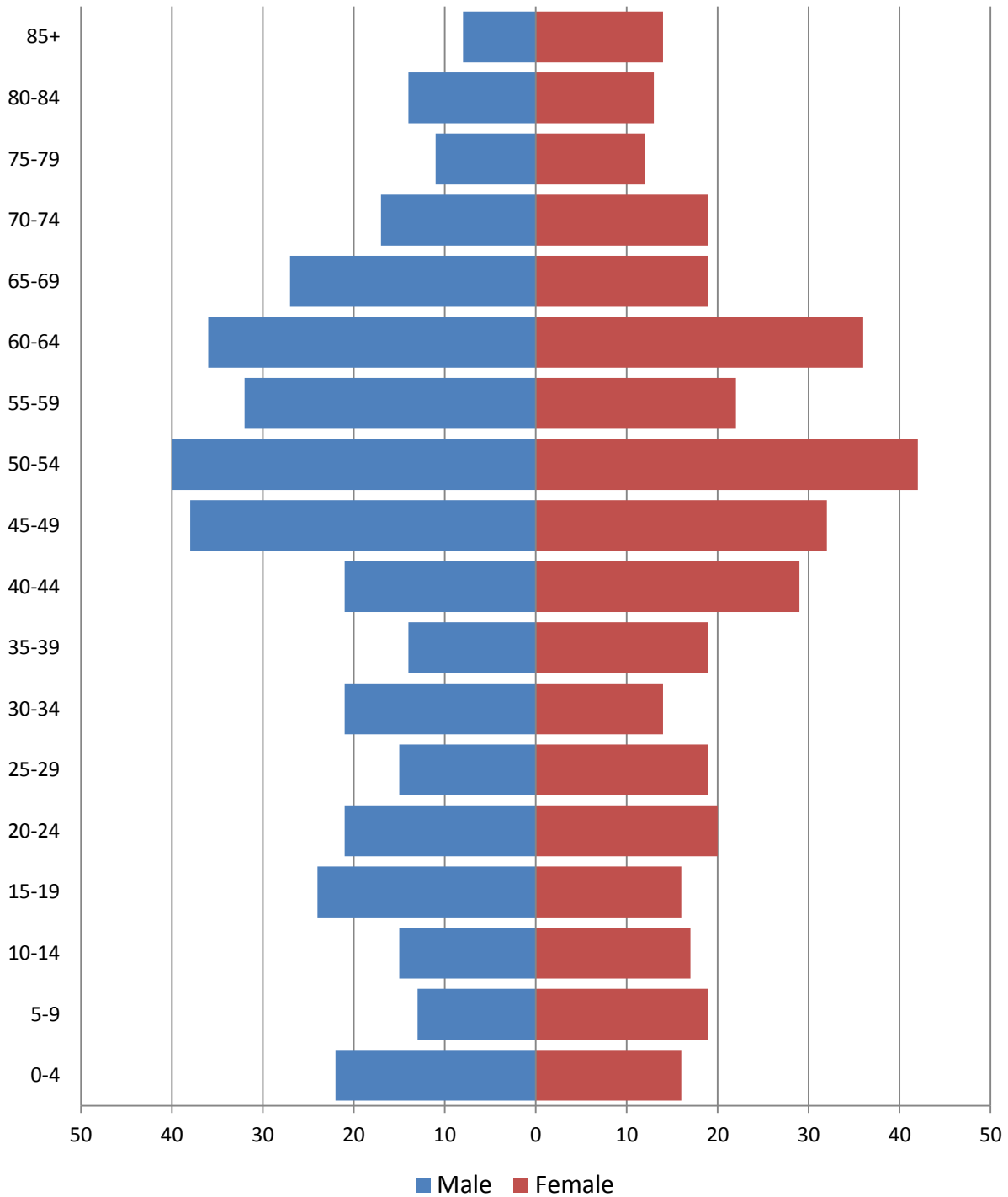
Source: 1970-2010 Decennial Census

Estimated population in 2012: 766. Change between April, 1 2010 and July 1, 2012: -1 (-0.1%)

Population by age

2010 population pyramid

2010 Population Pyramid, Stony Creek town



Source: 2010 Decennial Census

Selected age groups

Age group	2000		2010		Difference	
	Count	Share	Count	Share	Count	%
Total population	743	100.0%	767	100.0%	24	3.2%
Under 5	32	4.3%	38	5.0%	6	18.8%
5-17	140	18.8%	87	11.3%	-53	-37.9%
18-24	48	6.5%	58	7.6%	10	20.8%
25-44	213	28.7%	152	19.8%	-61	-28.6%
45-64	196	26.4%	278	36.2%	82	41.8%
65+	114	15.3%	154	20.1%	40	35.1%
85+	11	1.5%	22	2.9%	11	100.0%
Median age	40	0.0%	48.4		0	0.0%

Source: 2000 and-2010 Decennial Census

Population by race

	Total	
	Count	Percentage
Total population	767	100%
Not Hispanic or Latino		
One race		
White	721	94.0%
Black or African American	4	0.5%
American Indian and Alaska Native	2	0.3%
Asian	4	0.5%
Native Hawaiian and Other Pacific Islander	0	0.0%
Some other race	0	0.0%
Two or more races	13	1.7%
Hispanic or Latino (of any race)	23	3.0%

Source: 2010 Decennial Census

Housing units

Characteristics

	COUNT		PERCENTAGE	
	Estimate	Margin of error	Estimate	Margin of error
HOUSING OCCUPANCY				
Total housing units	661	± 63	100.0%	
Occupied housing units	435	± 61	65.8%	± 7.2
Vacant housing units	226	± 54	34.2%	± 7.2
YEAR STRUCTURE BUILT				
Total housing units	661	± 63	100.0%	
Built 2005 or later	0	± 89	0.0%	± 4.8
Built 2000 to 2004	36	± 23	5.4%	± 3.5
Built 1990 to 1999	47	± 18	7.1%	± 2.7
Built 1980 to 1989	84	± 33	12.7%	± 5.0
Built 1970 to 1979	132	± 46	20.0%	± 6.2
Built 1960 to 1969	67	± 30	10.1%	± 4.5
Built 1950 to 1959	56	± 30	8.5%	± 4.6
Built 1940 to 1949	38	± 22	5.7%	± 3.2
Built 1939 or earlier	201	± 55	30.4%	± 7.9
HOUSING TENURE				
Occupied housing units	435	± 61	100.0%	
Owner-occupied	339	± 51	77.9%	± 8.9
Renter-occupied	96	± 45	22.1%	± 8.9
HOUSE HEATING FUEL				
Occupied housing units	435	± 61	100.0%	
Utility gas	4	± 5	0.9%	± 1.2
Bottled, tank, or LP gas	83	± 39	19.1%	± 8.0
Electricity	22	± 18	5.1%	± 3.9
Fuel oil, kerosene, etc.	235	± 53	54.0%	± 9.8
Coal or coke	0	± 89	0.0%	± 7.2
Wood	86	± 31	19.8%	± 7.0
Solar energy	0	± 89	0.0%	± 7.2
Other fuel	0	± 89	0.0%	± 7.2
No fuel used	5	± 6	1.1%	± 1.5
VALUE				
Owner-occupied units	339	± 51	100.0%	
Less than \$50,000	25	± 21	7.4%	± 5.9
\$50,000 to \$99,999	115	± 33	33.9%	± 9.7
\$100,000 to \$149,999	46	± 22	13.6%	± 6.3
\$150,000 to \$199,999	50	± 24	14.7%	± 6.7
\$200,000 to \$299,999	75	± 30	22.1%	± 7.6
\$300,000 to \$499,999	22	± 16	6.5%	± 4.5
\$500,000 to \$999,999	6	± 7	1.8%	± 2.0
\$1,000,000 or more	0	± 89	0.0%	± 9.1
Median (dollars)	132,800	± 32,334		

Source: 2007-2011 American Community Survey

Educational attainment

	COUNT		PERCENTAGE	
	Estimate	Margin of error	Estimate	Margin of error
Population 25 years and over	786	± 133	100%	
EDUCATIONAL ATTAINMENT				
Less than 9th grade	27	± 21	3.4%	± 2.6
9th to 12th grade, no diploma	94	± 49	12.0%	± 5.5
High school graduate (includes equivalency)	304	± 60	38.7%	± 5.6
Some college, no degree	90	± 27	11.5%	± 3.4
Associate's degree	111	± 50	14.1%	± 5.6
Bachelor's degree	107	± 44	13.6%	± 5.1
Graduate or professional degree	53	± 26	6.7%	± 3.0
Percent high school graduate or higher			84.6%	± 5.8
Percent bachelor's degree or higher			20.4%	± 5.7

Source: 2007-2011 American Community Survey

Language spoken at home

	COUNT		PERCENTAGE		SPEAK ENGLISH LESS THAN "VERY WELL"	
	Estimate	Margin of error	Estimate	Margin of error	Estimate	Margin of error
Population 5 years and over	977	± 169	100%			
LANGUAGE SPOKEN AT HOME						
English only	951	± 169	97.3%	± 1.7		
Language other than English	26	± 16	2.7%	± 1.7	7	± 7
Spanish	4	± 6	0.4%	± 0.6	0	± 89
Other Indo-European languages	22	± 14	2.3%	± 1.6	7	± 7
Asian and Pacific Islander languages	0	± 89	0.0%	± 3.3	0	± 89
Other languages	0	± 89	0.0%	± 3.3	0	± 89

Source: 2007-2011 American Community Survey

Labor Force Characteristics

Labor force, employment and unemployment

	TOTAL		IN LABOR FORCE		EMPLOYED		UNEMPLOYMENT RATE	
	Estimate	Margin of error	Estimate	Margin of error	Estimate	Margin of error	Estimate	Margin of error
Population 16 years and over	850	± 138	61.4%	± 6.6	54.8%	± 7.2	10.7%	± 6.2
AGE								
16 to 19 years	20	± 14	30.0%	± 22.7	30.0%	± 22.7	0.0%	± 100.0
20 to 24 years	44	± 25	63.6%	± 26.4	18.2%	± 18.5	71.4%	± 31.8
25 to 44 years	242	± 80	91.7%	± 6.1	81.8%	± 12.1	10.8%	± 11.7
45 to 54 years	172	± 39	75.6%	± 12.0	70.9%	± 13.3	6.2%	± 9.2
55 to 64 years	186	± 67	50.5%	± 15.2	48.4%	± 14.9	4.3%	± 7.3
65 to 74 years	131	± 46	26.7%	± 13.9	26.7%	± 13.9	0.0%	± 50.1
75 years and over	55	± 21	12.7%	± 11.3	12.7%	± 11.3	0.0%	± 100.0
RACE AND HISPANIC OR LATINO ORIGIN								
One race	850	± 138	61.4%	± 6.6	54.8%	± 7.2	10.7%	± 6.2
White	821	± 133	61.8%	± 6.9	54.9%	± 7.4	11.0%	± 6.3
Black or African American	29	± 33	51.7%	± 51.7	51.7%	± 51.7	0.0%	± 76.6
American Indian and Alaska Native	0	± 89	-	**	-	**	-	**
Asian	0	± 89	-	**	-	**	-	**
Pacific Islander	0	± 89	-	**	-	**	-	**
Some other race	0	± 89	-	**	-	**	-	**
Two or more races	0	± 89	-	**	-	**	-	**
Hispanic or Latino origin (of any race)	0	± 89	-	**	-	**	-	**
White alone, not Hispanic or Latino	821	± 133	61.8%	± 6.9	54.9%	± 7.4	11.0%	± 6.3
SEX								
Population 20 to 64 years	644	± 133	73.6%	± 7.6	64.9%	± 8.2	11.8%	± 6.9
Male	333	± 87	71.5%	± 11.4	61.6%	± 11.5	13.9%	± 10.2
Female	311	± 57	75.9%	± 8.5	68.5%	± 11.1	9.7%	± 9.2
With own children under 6 years	26	± 19	84.6%	± 19.8	46.2%	± 34.9	45.5%	± 43.9
EDUCATIONAL ATTAINMENT								
Population 25 to 64 years	600	± 125	74.3%	± 7.2	68.3%	± 7.5	8.1%	± 6.4
Less than high school graduate	71	± 46	39.4%	± 30.2	39.4%	± 30.2	0.0%	± 56.0
High school graduate (includes equivalency)	245	± 57	69.4%	± 10.1	69.4%	± 10.1	0.0%	± 17.3
Some college or associate's degree	175	± 55	88.0%	± 10.1	67.4%	± 13.3	23.4%	± 15.6
Bachelor's degree or higher	109	± 46	86.2%	± 11.3	86.2%	± 11.3	0.0%	± 28.5

Table formula: **LABOR FORCE** = # EMPLOYED + # UNEMPLOYED
% IN LABOR FORCE = LABOR FORCE / TOTAL * 100%
% EMPLOYED = # EMPLOYED / TOTAL * 100%
UNEMPLOYMENT RATE = # UNEMPLOYED / LABOR FORCE * 100%

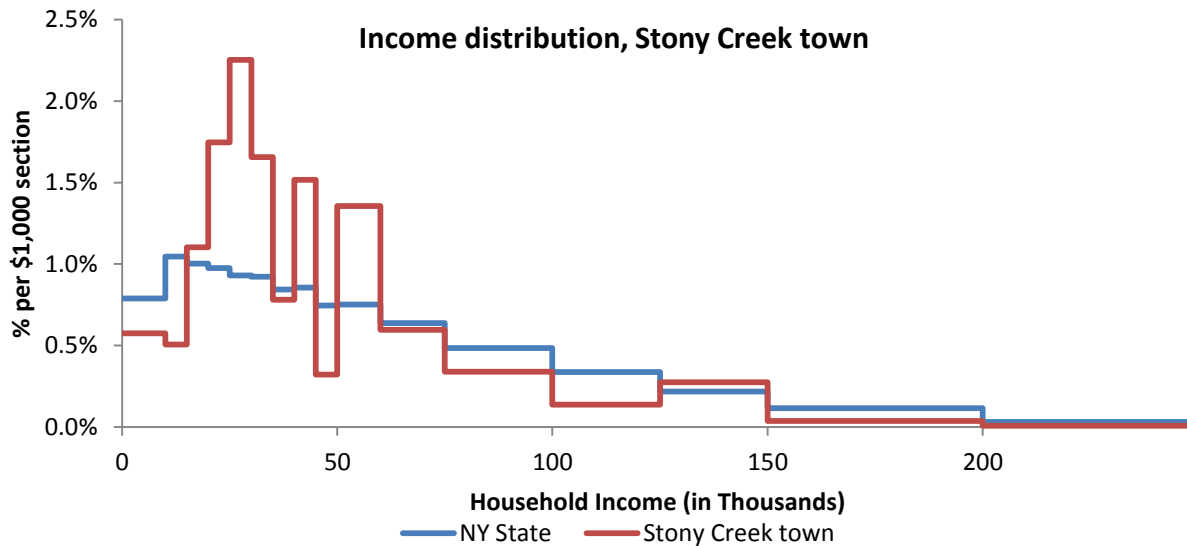
Source: 2007-2011 American Community Survey

Household Income

Distribution

	Estimate	Margin of error	Interval width (in \$1,000)	Est. per \$1,000 section
Total:	435	± 61		
Less than \$10,000	25	± 17	10	2.5
\$10,000 to \$14,999	11	± 16	5	2.2
\$15,000 to \$19,999	24	± 21	5	4.8
\$20,000 to \$24,999	38	± 20	5	7.6
\$25,000 to \$29,999	49	± 28	5	9.8
\$30,000 to \$34,999	36	± 24	5	7.2
\$35,000 to \$39,999	17	± 16	5	3.4
\$40,000 to \$44,999	33	± 16	5	6.6
\$45,000 to \$49,999	7	± 7	5	1.4
\$50,000 to \$59,999	59	± 24	10	5.9
\$60,000 to \$74,999	39	± 25	15	2.6
\$75,000 to \$99,999	37	± 22	25	1.5
\$100,000 to \$124,999	15	± 8	25	0.6
\$125,000 to \$149,999	30	± 21	25	1.2
\$150,000 to \$199,999	8	± 13	50	0.2
\$200,000 or more	7	± 8	-	-

Source: 2007-2011 American Community Survey



Source: 2007-2011 American Community Survey

Poverty

Poverty characteristics

	TOTAL		BELOW POVERTY LEVEL		PERCENT BELOW POVERTY LEVEL	
	Estimate	Margin of error	Estimate	Margin of error	Estimate	Margin of error
Population for whom poverty status is determined	1,005	± 177	138	± 73	13.7%	± 6.7
AGE						
Under 18 years	166	± 73	37	± 43	22.3%	± 22.8
Related children under 18 years	166	± 73	37	± 43	22.3%	± 22.8
18 to 64 years	653	± 133	79	± 40	12.1%	± 6.0
65 years and over	186	± 48	22	± 17	11.8%	± 9.4
SEX						
Male	522	± 112	76	± 44	14.6%	± 7.5
Female	483	± 81	62	± 36	12.8%	± 7.3
RACE AND HISPANIC OR LATINO ORIGIN						
One race	1,005	± 177	138	± 73	13.7%	± 6.7
White	976	± 174	138	± 73	14.1%	± 6.8
Black or African American	29	± 33	0	± 89	0.0%	± 55.1
American Indian and Alaska Native	0	± 89	0	± 89	-%	± **
Asian	0	± 89	0	± 89	-%	± **
Hispanic or Latino origin (of any race)	0	± 89	0	± 89	-%	± **
White alone, not Hispanic or Latino	976	± 174	138	± 73	14.1%	± 6.8
EDUCATIONAL ATTAINMENT						
Population 25 years and over	786	± 133	101	± 41	12.8%	± 4.9
Less than high school graduate	121	± 53	29	± 22	24.0%	± 18.0
High school graduate (includes equivalency)	304	± 60	45	± 33	14.8%	± 9.8
Some college, associate's degree	201	± 52	27	± 24	13.4%	± 10.5
Bachelor's degree or higher	160	± 54	0	± 89	0.0%	± 18.3
EMPLOYMENT STATUS						
Civilian labor force 16 years and over	522	± 100	58	± 37	11.1%	± 6.8
Employed	466	± 94	50	± 31	10.7%	± 6.6
Male	226	± 58	27	± 23	11.9%	± 9.4
Female	240	± 50	23	± 21	9.6%	± 8.4
Unemployed	56	± 35	8	± 12	14.3%	± 21.6
Male	33	± 27	8	± 12	24.2%	± 34.3
Female	23	± 22	0	± 89	0.0%	± 61.8
WORK EXPERIENCE IN THE PAST 12 MONTHS						
Population 16 years and over	850	± 138	106	± 42	12.5%	± 4.7
Worked full-time, year-round	301	± 74	19	± 18	6.3%	± 5.9
Worked part-time or part-year	239	± 67	40	± 24	16.7%	± 8.3
Did not work	310	± 81	47	± 24	15.2%	± 7.0

Source: 2007-2011 American Community Survey