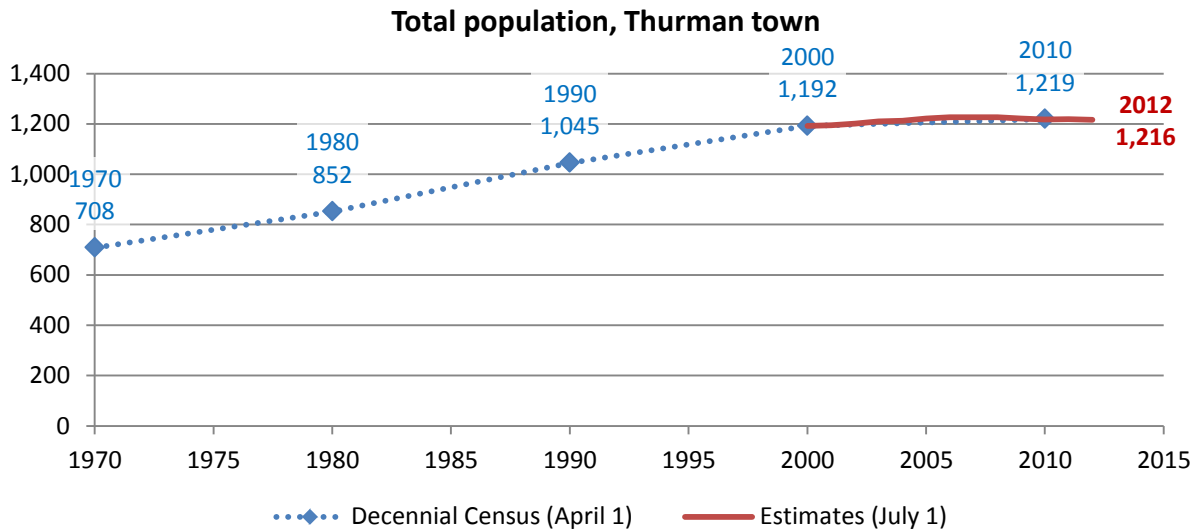


Thurman town

Total Population

Historic Decennial Census and recent annual estimates



Source: 1970-2010 Decennial Census, 2000-2010 intercensal population estimates and 2010-2012 post censal population estimates (all U.S. Census Bureau)

Change since previous Census

Change

Decennial Census	Total population	Number	Percent
1970	708		
1980	852	144	20.3%
1990	1,045	193	22.7%
2000	1,192	147	14.1%
2010	1,219	27	2.3%

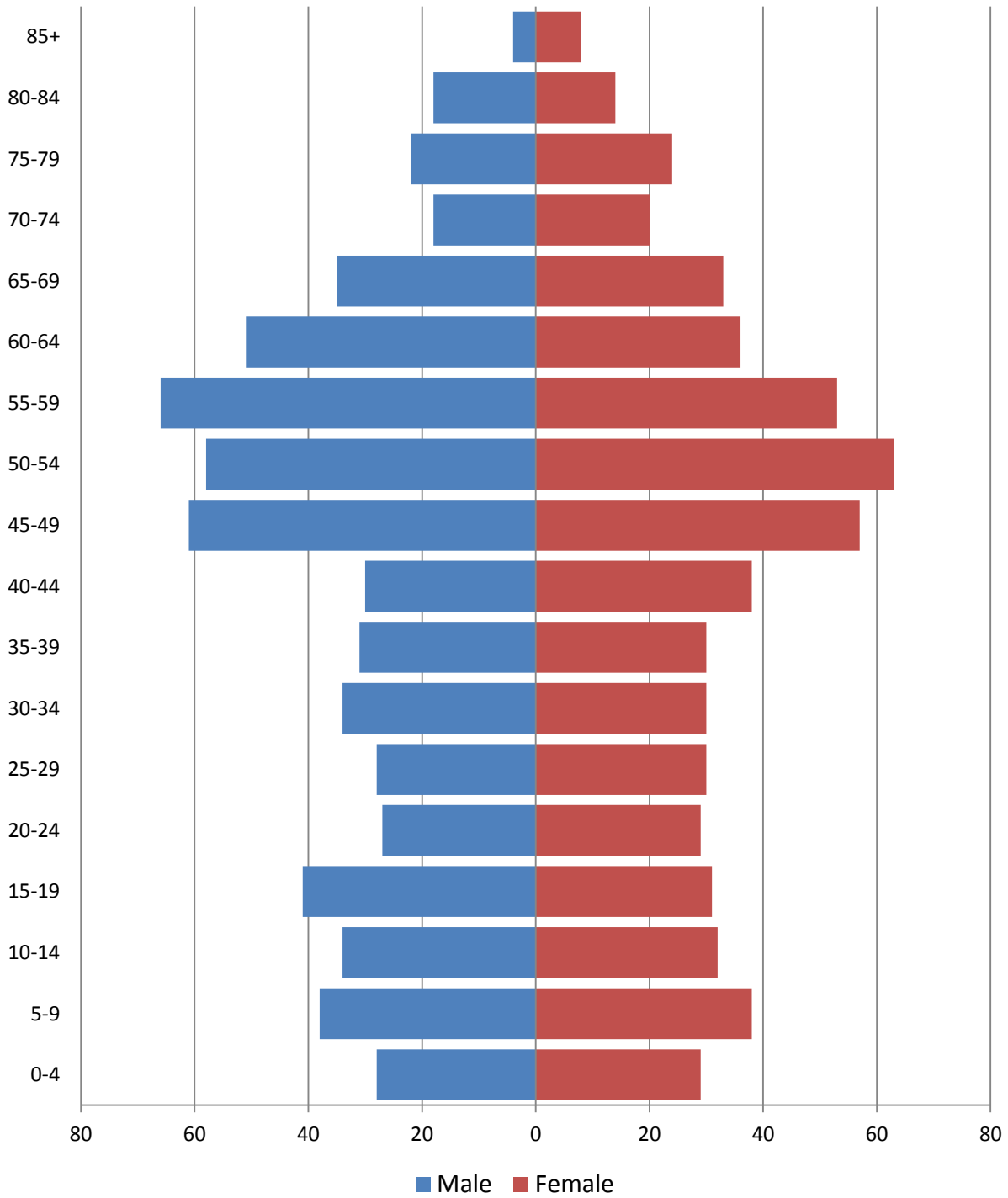
Source: 1970-2010 Decennial Census

Estimated population in 2012: 1,216. Change between April, 1 2010 and July 1, 2012: -3 (-0.2%)

Population by age

2010 population pyramid

2010 Population Pyramid, Thurman town



Source: 2010 Decennial Census

Selected age groups

Age group	2000		2010		Difference	
	Count	Share	Count	Share	Count	%
Total population	1,199	100.0%	1,219	100.0%	20	1.7%
Under 5	60	5.0%	57	4.7%	-3	-5.0%
5-17	250	20.9%	185	15.2%	-65	-26.0%
18-24	72	6.0%	85	7.0%	13	18.1%
25-44	337	28.1%	251	20.6%	-86	-25.5%
45-64	306	25.5%	445	36.5%	139	45.4%
65+	174	14.5%	196	16.1%	22	12.6%
85+	11	0.9%	12	1.0%	1	9.1%
Median age	40	0.0%	46.2		0	0.0%

Source: 2000 and-2010 Decennial Census

Population by race

	Total	
	Count	Percentage
Total population	1,219	100%
Not Hispanic or Latino		
One race		
White	1,177	96.6%
Black or African American	3	0.2%
American Indian and Alaska Native	6	0.5%
Asian	3	0.2%
Native Hawaiian and Other Pacific Islander	0	0.0%
Some other race	0	0.0%
Two or more races	24	2.0%
Hispanic or Latino (of any race)	6	0.5%

Source: 2010 Decennial Census

Housing units

Characteristics

	COUNT		PERCENTAGE	
	Estimate	Margin of error	Estimate	Margin of error
HOUSING OCCUPANCY				
Total housing units	759	± 72	100.0%	
Occupied housing units	499	± 57	65.7%	± 6.1
Vacant housing units	260	± 57	34.3%	± 6.1
YEAR STRUCTURE BUILT				
Total housing units	759	± 72	100.0%	
Built 2005 or later	6	± 6	0.8%	± 0.8
Built 2000 to 2004	31	± 21	4.1%	± 2.9
Built 1990 to 1999	123	± 34	16.2%	± 4.4
Built 1980 to 1989	151	± 50	19.9%	± 6.2
Built 1970 to 1979	139	± 50	18.3%	± 6.0
Built 1960 to 1969	64	± 30	8.4%	± 4.0
Built 1950 to 1959	49	± 23	6.5%	± 3.0
Built 1940 to 1949	31	± 19	4.1%	± 2.5
Built 1939 or earlier	165	± 54	21.7%	± 6.6
HOUSING TENURE				
Occupied housing units	499	± 57	100.0%	
Owner-occupied	458	± 54	91.8%	± 4.3
Renter-occupied	41	± 22	8.2%	± 4.3
HOUSE HEATING FUEL				
Occupied housing units	499	± 57	100.0%	
Utility gas	0	± 89	0.0%	± 6.3
Bottled, tank, or LP gas	60	± 21	12.0%	± 4.3
Electricity	36	± 24	7.2%	± 4.6
Fuel oil, kerosene, etc.	231	± 45	46.3%	± 8.5
Coal or coke	0	± 89	0.0%	± 6.3
Wood	162	± 44	32.5%	± 7.5
Solar energy	3	± 6	0.6%	± 1.1
Other fuel	7	± 7	1.4%	± 1.4
No fuel used	0	± 89	0.0%	± 6.3
VALUE				
Owner-occupied units	458	± 54	100.0%	
Less than \$50,000	29	± 14	6.3%	± 3.1
\$50,000 to \$99,999	111	± 33	24.2%	± 6.6
\$100,000 to \$149,999	130	± 42	28.4%	± 8.1
\$150,000 to \$199,999	76	± 26	16.6%	± 5.9
\$200,000 to \$299,999	67	± 33	14.6%	± 6.5
\$300,000 to \$499,999	35	± 19	7.6%	± 4.4
\$500,000 to \$999,999	10	± 10	2.2%	± 2.2
\$1,000,000 or more	0	± 89	0.0%	± 6.8
Median (dollars)	138,600	± 10,551		

Source: 2007-2011 American Community Survey

Educational attainment

	COUNT		PERCENTAGE	
	Estimate	Margin of error	Estimate	Margin of error
Population 25 years and over	867	± 104	100%	
EDUCATIONAL ATTAINMENT				
Less than 9th grade	45	± 20	5.2%	± 2.1
9th to 12th grade, no diploma	129	± 46	14.9%	± 5.0
High school graduate (includes equivalency)	355	± 71	40.9%	± 6.8
Some college, no degree	154	± 34	17.8%	± 3.5
Associate's degree	48	± 28	5.5%	± 3.1
Bachelor's degree	55	± 32	6.3%	± 3.9
Graduate or professional degree	81	± 45	9.3%	± 4.8
Percent high school graduate or higher			79.9%	± 5.4
Percent bachelor's degree or higher			15.7%	± 5.6

Source: 2007-2011 American Community Survey

Language spoken at home

	COUNT		PERCENTAGE		SPEAK ENGLISH LESS THAN "VERY WELL"	
	Estimate	Margin of error	Estimate	Margin of error	Estimate	Margin of error
Population 5 years and over	1,064	± 129	100%			
LANGUAGE SPOKEN AT HOME						
English only	1,020	± 125	95.9%	± 2.3		
Language other than English	44	± 25	4.1%	± 2.3	26	± 26
Spanish	11	± 8	1.0%	± 0.8	0	± 89
Other Indo-European languages	7	± 7	0.7%	± 0.7	0	± 89
Asian and Pacific Islander languages	26	± 26	2.4%	± 2.5	26	± 26
Other languages	0	± 89	0.0%	± 3.0	0	± 89

Source: 2007-2011 American Community Survey

Labor Force Characteristics

Labor force, employment and unemployment

	TOTAL		IN LABOR FORCE		EMPLOYED		UNEMPLOYMENT RATE	
	Estimate	Margin of error	Estimate	Margin of error	Estimate	Margin of error	Estimate	Margin of error
Population 16 years and over	922	± 111	59.5%	± 6.7	55.4%	± 6.5	6.9%	± 3.2
AGE								
16 to 19 years	19	± 10	15.8%	± 24.4	0.0%	± 68.0	100.0%	± 100.0
20 to 24 years	36	± 17	91.7%	± 10.9	83.3%	± 16.6	9.1%	± 13.5
25 to 44 years	180	± 48	88.3%	± 7.0	76.1%	± 9.9	13.8%	± 8.9
45 to 54 years	277	± 57	84.5%	± 7.7	82.3%	± 7.8	2.6%	± 3.2
55 to 64 years	193	± 52	54.4%	± 14.8	52.3%	± 14.4	3.8%	± 4.9
65 to 74 years	121	± 47	9.9%	± 9.8	9.9%	± 9.8	0.0%	± 85.6
75 years and over	96	± 40	3.1%	± 5.5	3.1%	± 5.5	0.0%	± 100.0
RACE AND HISPANIC OR LATINO ORIGIN								
One race	922	± 111	59.5%	± 6.7	55.4%	± 6.5	6.9%	± 3.2
White	906	± 108	59.1%	± 6.9	54.9%	± 6.8	7.1%	± 3.3
Black or African American	2	± 3	0.0%	± 100.0	0.0%	± 100.0	-	**
American Indian and Alaska Native	0	± 89	-	**	-	**	-	**
Asian	0	± 89	-	**	-	**	-	**
Pacific Islander	14	± 15	100.0%	± 79.3	100.0%	± 79.3	0.0%	± 79.3
Some other race	0	± 89	-	**	-	**	-	**
Two or more races	0	± 89	-	**	-	**	-	**
Hispanic or Latino origin (of any race)	15	± 13	26.7%	± 32.7	0.0%	± 76.6	100.0%	± 100.0
White alone, not Hispanic or Latino	891	± 107	59.6%	± 7.0	55.8%	± 6.8	6.4%	± 3.2
SEX								
Population 20 to 64 years	686	± 96	77.4%	± 5.9	72.3%	± 6.2	6.6%	± 3.2
Male	340	± 54	85.3%	± 6.7	76.2%	± 7.4	10.7%	± 5.3
Female	346	± 54	69.7%	± 7.8	68.5%	± 7.8	1.7%	± 2.4
With own children under 6 years	37	± 19	67.6%	± 21.9	67.6%	± 21.9	0.0%	± 59.3
EDUCATIONAL ATTAINMENT								
Population 25 to 64 years	650	± 91	76.6%	± 6.0	71.7%	± 6.2	6.4%	± 3.2
Less than high school graduate	91	± 28	64.8%	± 14.7	50.5%	± 16.0	22.0%	± 15.9
High school graduate (includes equivalency)	269	± 63	77.7%	± 7.6	71.7%	± 7.9	7.7%	± 5.6
Some college or associate's degree	177	± 45	84.7%	± 10.3	83.1%	± 10.7	2.0%	± 3.8
Bachelor's degree or higher	113	± 45	70.8%	± 21.2	70.8%	± 21.2	0.0%	± 32.1

Table formula: **LABOR FORCE** = # EMPLOYED + # UNEMPLOYED
 % IN LABOR FORCE = LABOR FORCE / TOTAL * 100%
 % EMPLOYED = # EMPLOYED / TOTAL * 100%
 UNEMPLOYMENT RATE = # UNEMPLOYED / LABOR FORCE * 100%

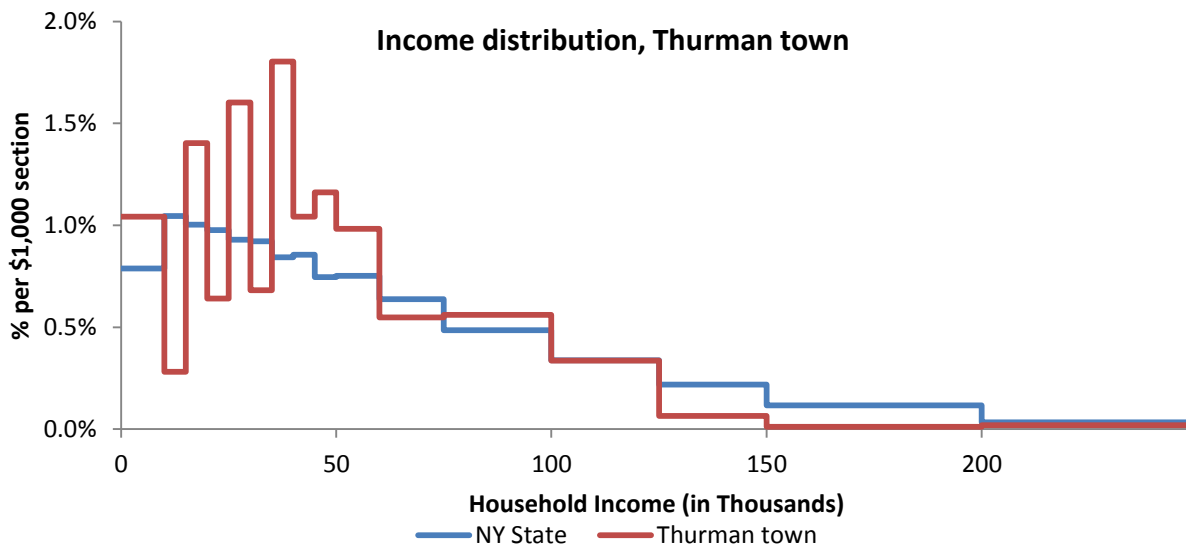
Source: 2007-2011 American Community Survey

Household Income

Distribution

	Estimate	Margin of error	Interval width (in \$1,000)	Est. per \$1,000 section
Total:	499	± 57		
Less than \$10,000	52	± 27	10	5.2
\$10,000 to \$14,999	7	± 7	5	1.4
\$15,000 to \$19,999	35	± 15	5	7.0
\$20,000 to \$24,999	16	± 13	5	3.2
\$25,000 to \$29,999	40	± 25	5	8.0
\$30,000 to \$34,999	17	± 11	5	3.4
\$35,000 to \$39,999	45	± 22	5	9.0
\$40,000 to \$44,999	26	± 22	5	5.2
\$45,000 to \$49,999	29	± 14	5	5.8
\$50,000 to \$59,999	49	± 24	10	4.9
\$60,000 to \$74,999	41	± 20	15	2.7
\$75,000 to \$99,999	70	± 26	25	2.8
\$100,000 to \$124,999	42	± 19	25	1.7
\$125,000 to \$149,999	8	± 9	25	0.3
\$150,000 to \$199,999	3	± 6	50	0.1
\$200,000 or more	19	± 19	-	-

Source: 2007-2011 American Community Survey



Source: 2007-2011 American Community Survey

Poverty

Poverty characteristics

	TOTAL		BELOW POVERTY LEVEL		PERCENT BELOW POVERTY LEVEL	
	Estimate	Margin of error	Estimate	Margin of error	Estimate	Margin of error
Population for whom poverty status is determined	1,099	± 136	109	± 62	9.9%	± 5.4
AGE						
Under 18 years	184	± 53	31	± 29	16.8%	± 13.2
Related children under 18 years	184	± 53	31	± 29	16.8%	± 13.2
18 to 64 years	698	± 98	47	± 27	6.7%	± 3.9
65 years and over	217	± 61	31	± 32	14.3%	± 13.6
SEX						
Male	548	± 73	45	± 31	8.2%	± 5.4
Female	551	± 80	64	± 43	11.6%	± 7.4
RACE AND HISPANIC OR LATINO ORIGIN						
One race	1,099	± 136	109	± 62	9.9%	± 5.4
White	1,062	± 134	107	± 62	10.1%	± 5.5
Black or African American	2	± 3	2	± 3	100.0%	± 100.0
American Indian and Alaska Native	0	± 89	0	± 89	-%	± **
Asian	0	± 89	0	± 89	-%	± **
Hispanic or Latino origin (of any race)	26	± 24	0	± 89	0.0%	± 58.2
White alone, not Hispanic or Latino	1,036	± 132	107	± 62	10.3%	± 5.6
EDUCATIONAL ATTAINMENT						
Population 25 years and over	867	± 104	75	± 40	8.7%	± 4.5
Less than high school graduate	174	± 53	37	± 34	21.3%	± 16.9
High school graduate (includes equivalency)	355	± 71	27	± 20	7.6%	± 5.7
Some college, associate's degree	202	± 46	8	± 12	4.0%	± 5.9
Bachelor's degree or higher	136	± 50	3	± 5	2.2%	± 3.9
EMPLOYMENT STATUS						
Civilian labor force 16 years and over	549	± 84	18	± 10	3.3%	± 2.0
Employed	511	± 82	14	± 12	2.7%	± 2.4
Male	269	± 48	7	± 9	2.6%	± 3.3
Female	242	± 44	7	± 6	2.9%	± 2.7
Unemployed	38	± 17	4	± 6	10.5%	± 14.0
Male	34	± 17	4	± 6	11.8%	± 15.3
Female	4	± 6	0	± 89	0.0%	± 100.0
WORK EXPERIENCE IN THE PAST 12 MONTHS						
Population 16 years and over	922	± 111	78	± 42	8.5%	± 4.4
Worked full-time, year-round	341	± 63	0	± 89	0.0%	± 9.1
Worked part-time or part-year	238	± 52	23	± 16	9.7%	± 6.4
Did not work	343	± 77	55	± 37	16.0%	± 9.7

Source: 2007-2011 American Community Survey