

# Warren County Profile 2013

*A collection of recent demographic, social, economic and agricultural data*

Compiled by Jan Vink

Assisted by Joe Francis, Sutee Anantsuksomsri, Nij Tontisirin, Johannes Plambeck



**Cornell University**  
Cooperative Extension



This profile is a part of a set of profiles generated for each county in New York State. The profiles were developed and generated by the Cornell Program on Applied Demographics. The work is sponsored by Cornell Cooperative Extension and promoted with webinars and workshops in coordination with the Community & Regional Development Institute.

Cornell Program on Applied Demographics:

The Program on Applied Demographics (PAD) brings skills in demographics, economics, statistics, data gathering and data analysis together to provide a variety of organizations with data, information and advice.

For more information: <http://pad.human.cornell.edu/>

Cornell Cooperative Extension:

Cornell Cooperative Extension (CCE) puts knowledge to work in pursuit of economic vitality, ecological sustainability and social well-being. We bring local experience and research based solutions together, helping New York State families and communities thrive in our rapidly changing world.

For more information: <http://cce.cornell.edu/>

Community & Regional Development Institute:

The Community & Regional Development Institute (CaRDI) supports informed decision making for residents and communities in New York State through applied research and education.

For more information: <http://cardi.cornell.edu/>

All profiles are freely downloadable as PDF documents on the PAD website:

<http://pad.human.cornell.edu/profiles/index.cfm>

## Contents

Contents .....	2
1 Reference Maps .....	4
2 Population density and Urban Areas Map .....	6
3 Total Population .....	7
3.1 Historic and projected .....	7
3.2 Change since previous Census .....	7
3.3 Annual population estimates .....	8
3.4 Percentage sub county change 2000-2010 .....	9
4 Population by age .....	11
4.1 Historic and projected population pyramids .....	11
4.2 Selected age groups .....	12
4.3 Median age: comparison between areas .....	14
5 Race .....	15
5.1 Total and household population by race .....	15
5.2 Race composition by age .....	15
6 Housing units .....	16
6.1 Characteristics .....	16
6.2 Historical data on number of housing units and occupancy status .....	17
7 Education .....	18
7.1 Enrollment by level of school .....	18
7.2 Enrollment by age .....	18
7.3 Percentage age 18-24 enrolled in college .....	18
7.4 Educational attainment .....	19
8 Language spoken at home .....	19
9 Labor Force Characteristics .....	20
9.1 Labor force, employment and unemployment .....	20
9.2 Annual unemployment rate .....	21
9.3 Monthly unemployment rate .....	21
9.4 Employment and number of jobs .....	22
9.5 Class of worker .....	22
9.6 Jobs by industry sector .....	23
10 Household Income .....	24
10.1 Distribution .....	24
10.2 Median household income: Trends over time .....	25
10.3 Median household income: Comparison between areas .....	26
11 Poverty .....	27
11.1 Poverty characteristics .....	27
11.2 Poverty: Trends over time: Count .....	28
11.3 Poverty: Trends over time: Rate .....	28
11.4 Poverty rate: comparison between areas .....	29
12 Agriculture .....	30
12.1 Number of farms and land in farms .....	30
12.2 Farm Operator Characteristics .....	30

12.3 Map of type of crop .....	31
12.4 Estimated acreage by crop .....	32
13 Climate .....	33
14 Glossary.....	34
15 References .....	37

**1 Reference Maps**

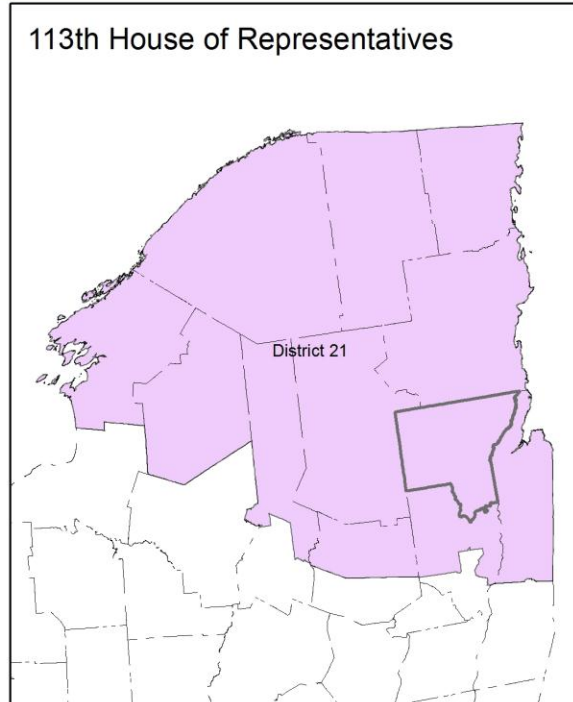
## Warren County, NY

### Overlap with School and Political Districts

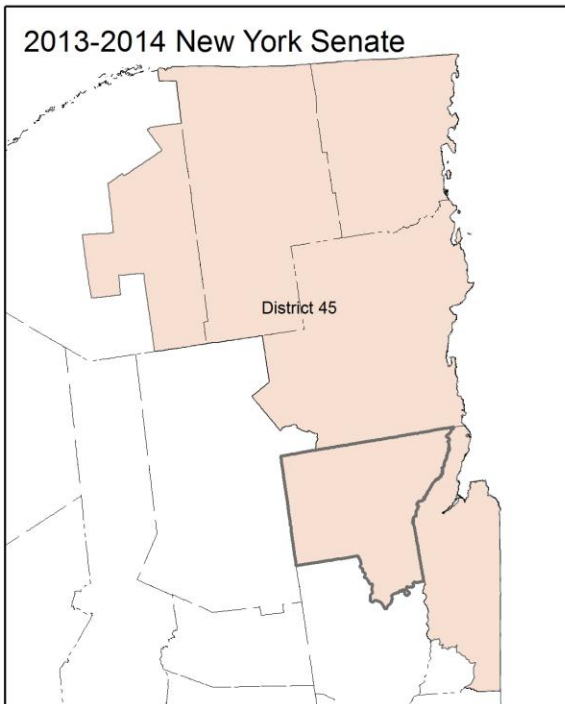
School Districts



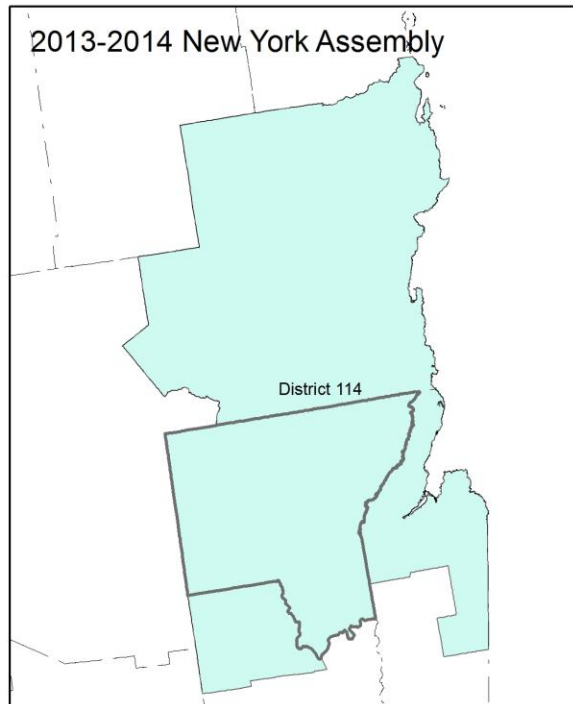
113th House of Representatives



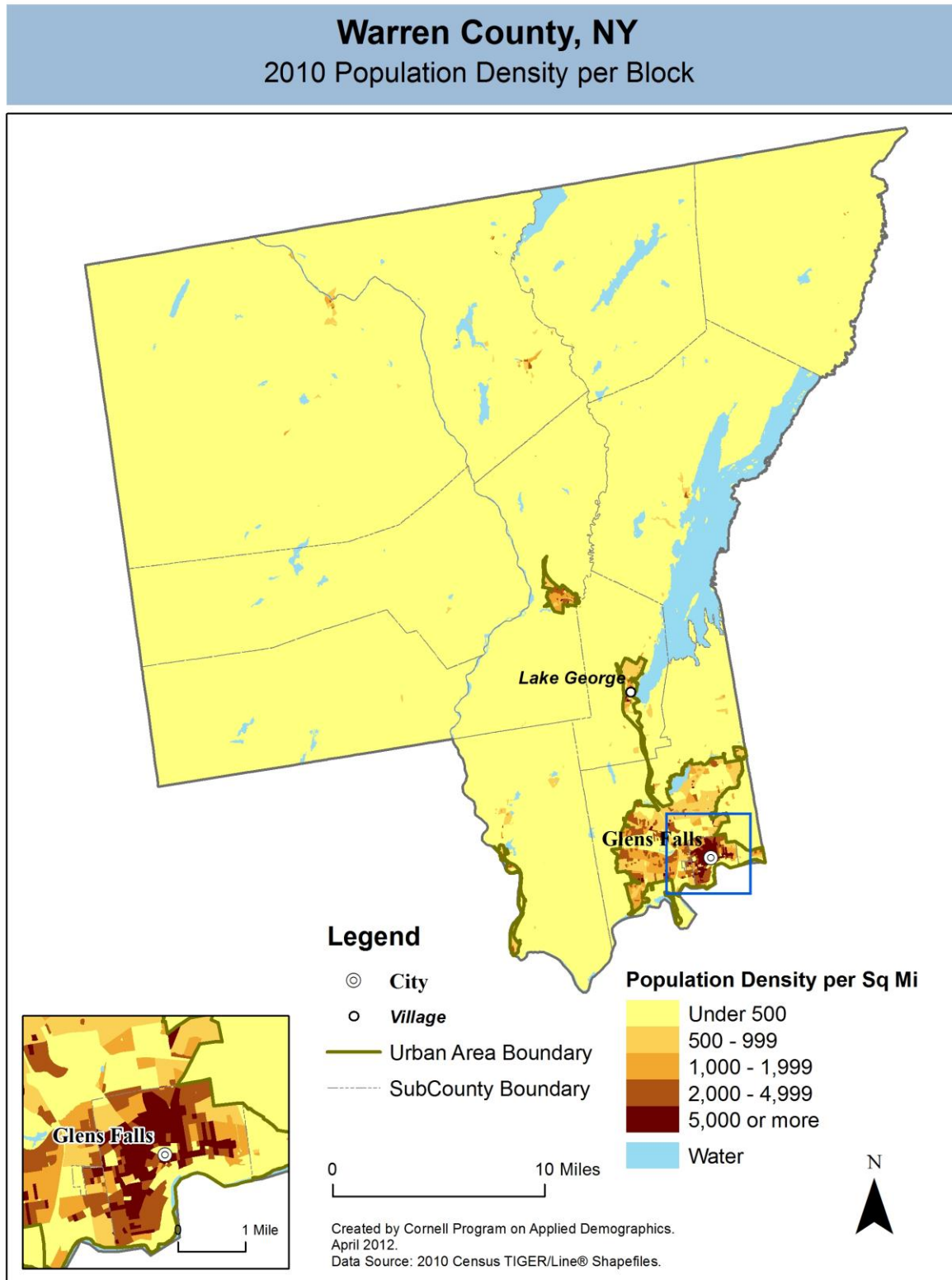
2013-2014 New York Senate



2013-2014 New York Assembly



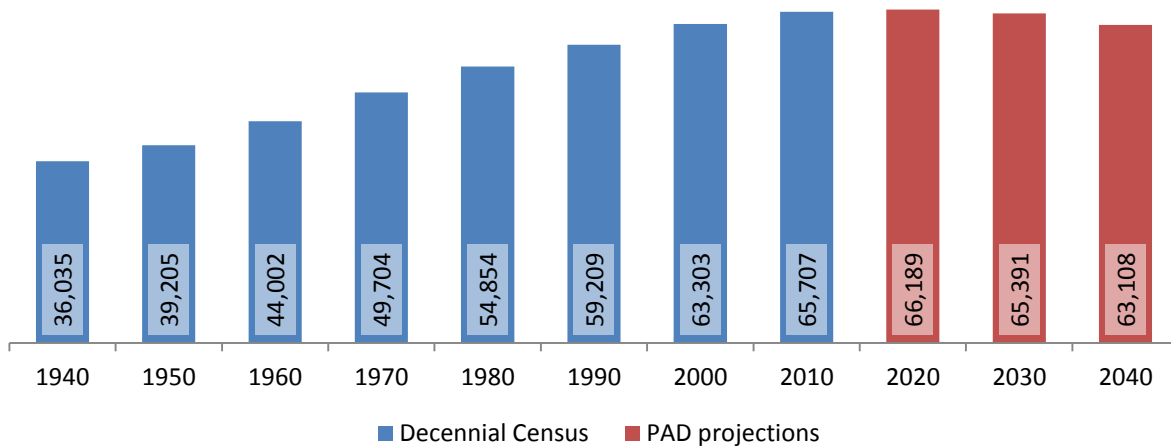
## 2 Population density and Urban Areas Map



### 3 Total Population

#### 3.1 Historic and projected

Total population, Warren County, 1940-2040



Source: 1940-2010 Decennial Census and projections by Cornell Program on Applied Demographics

#### 3.2 Change since previous Census

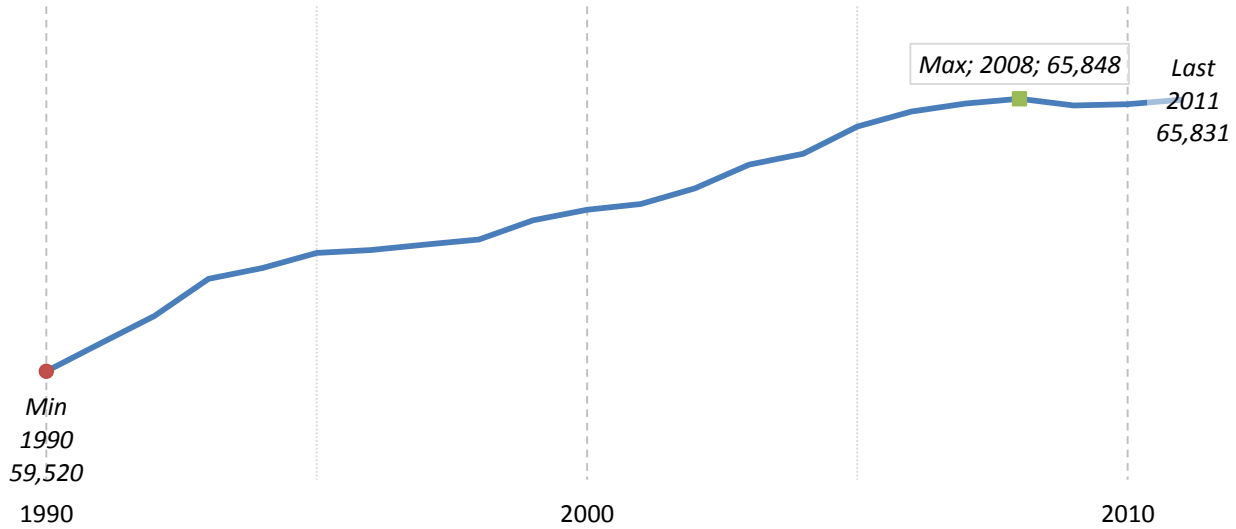
		Total population	Change	
			Number	Percent
Decennial Census	1940	36,035		
	1950	39,205	3,170	8.8%
	1960	44,002	4,797	12.2%
	1970	49,704	5,702	13.0%
	1980	54,854	5,150	10.4%
	1990	59,209	4,355	7.9%
	2000	63,303	4,094	6.9%
	2010	65,707	2,404	3.8%
PAD projec- tions	2020	66,189	482	0.7%
	2030	65,391	-798	-1.2%
	2040	63,108	-2,283	-3.5%

Source: 1940-2010 Decennial Census and projections by Cornell Program on Applied Demographics



### 3.3 Annual population estimates

**Annual population estimates  
Warren County, 1990-2011**



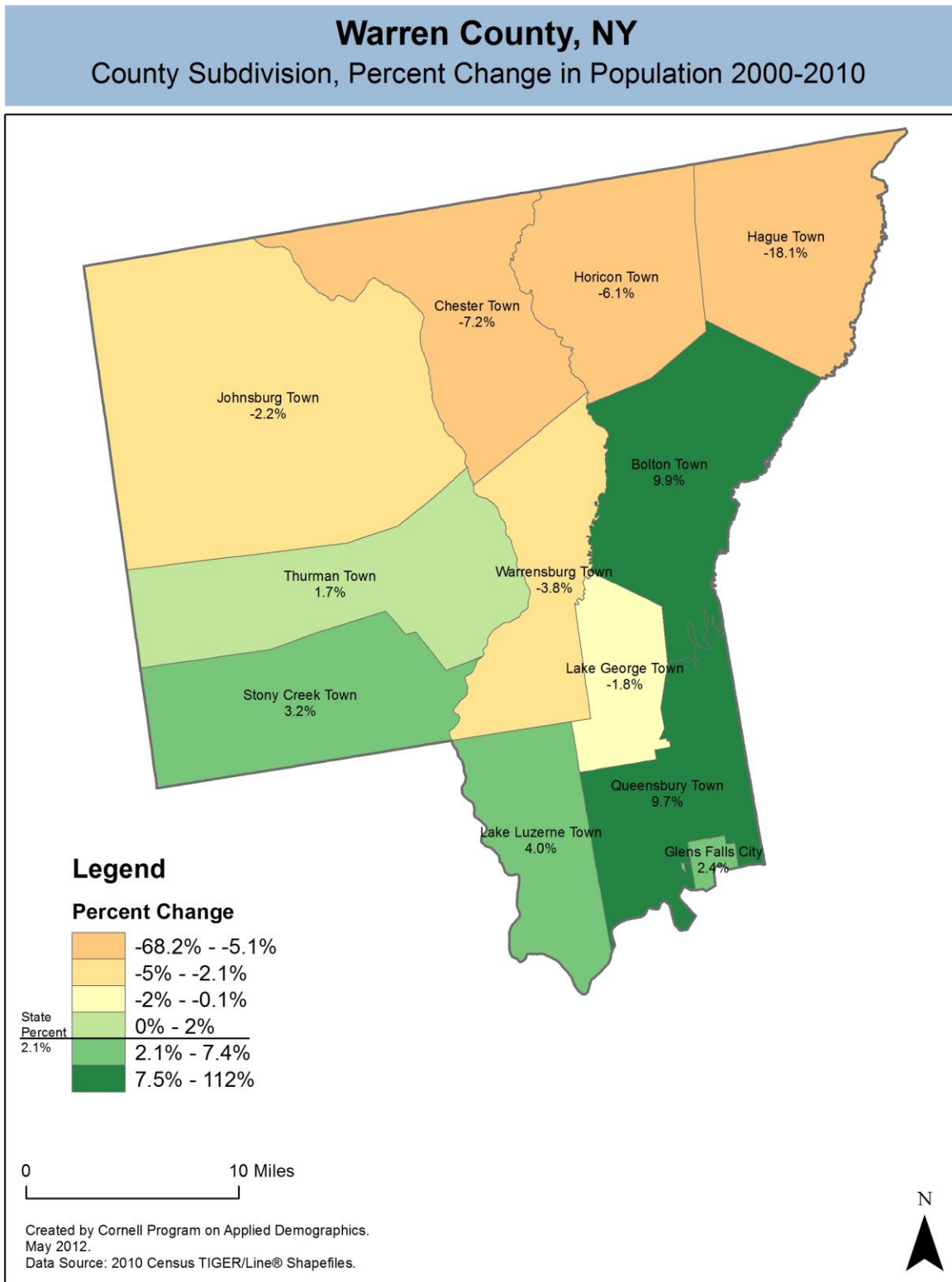
Source: U.S. Census Bureau population estimates (1990-1999 and 2000-2009 intercensal and vintage 2011 postcensal)

### 3.4 Percentage sub county change 2000-2010

	Total Population		Difference	
	2000	2010	Count	%
New York State	18,976,821 *	19,378,102	401,281	2.1%
Warren County	63,303	65,707	2,404	3.8%
<b>Cities</b>				
Glens Falls	14,354	14,700	346	2.4%
<b>Towns</b>				
Bolton	2,117	2,326	209	9.9%
Chester	3,614	3,355	-259	-7.2%
Hague	854	699	-155	-18.1%
Horicon	1,479	1,389	-90	-6.1%
Johnsburg	2,450	2,395	-55	-2.2%
Lake George	3,578	3,515	-63	-1.8%
Lake Luzerne	3,219	3,347	128	4.0%
Queensbury	25,441	27,901	2,460	9.7%
Stony Creek	743	767	24	3.2%
Thurman	1,199	1,219	20	1.7%
Warrensburg	4,255	4,094	-161	-3.8%

\* Original counts revised through Count Question Resolution Program (CQR)

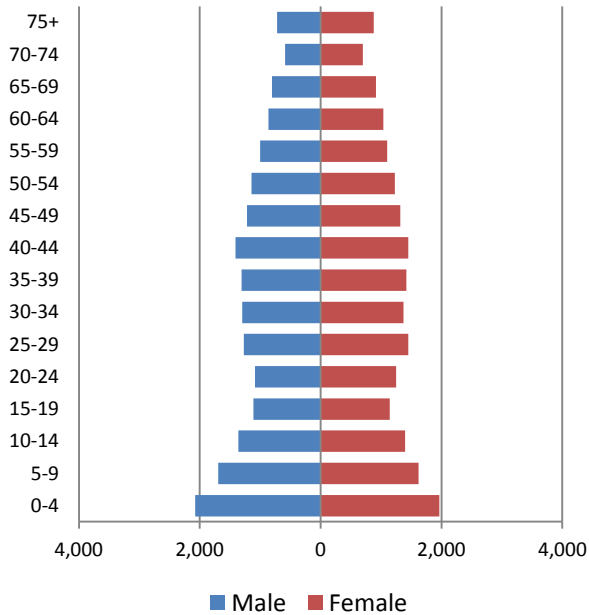
Source: U.S. Census Bureau intercensal population estimates 2000-2010



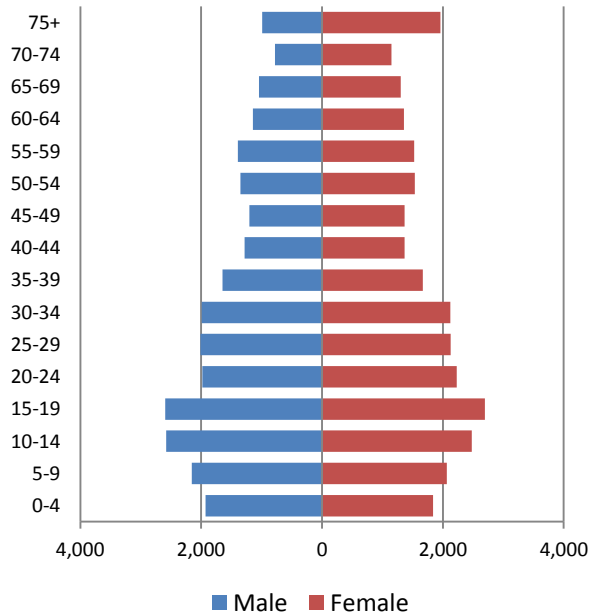
## 4 Population by age

### 4.1 Historic and projected population pyramids

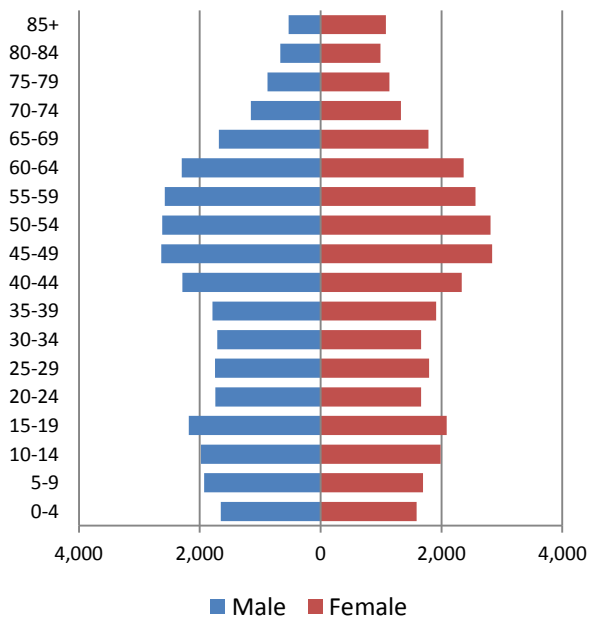
**1950 Population Pyramid, Warren County**



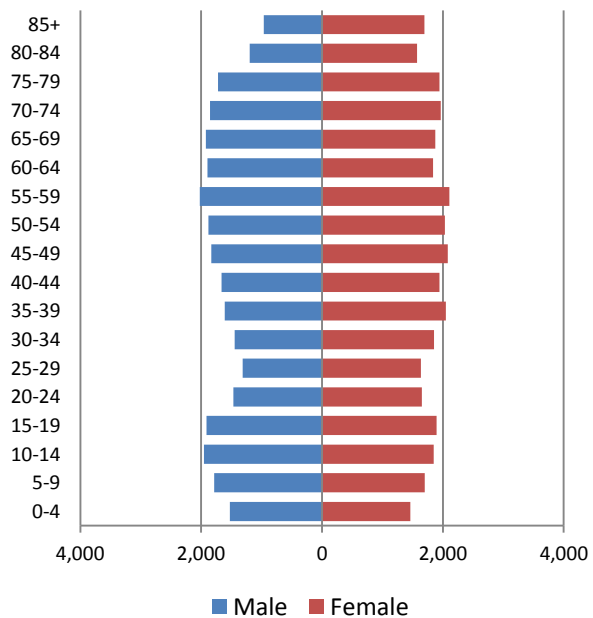
**1980 Population Pyramid, Warren County**



**2010 Population Pyramid, Warren County**



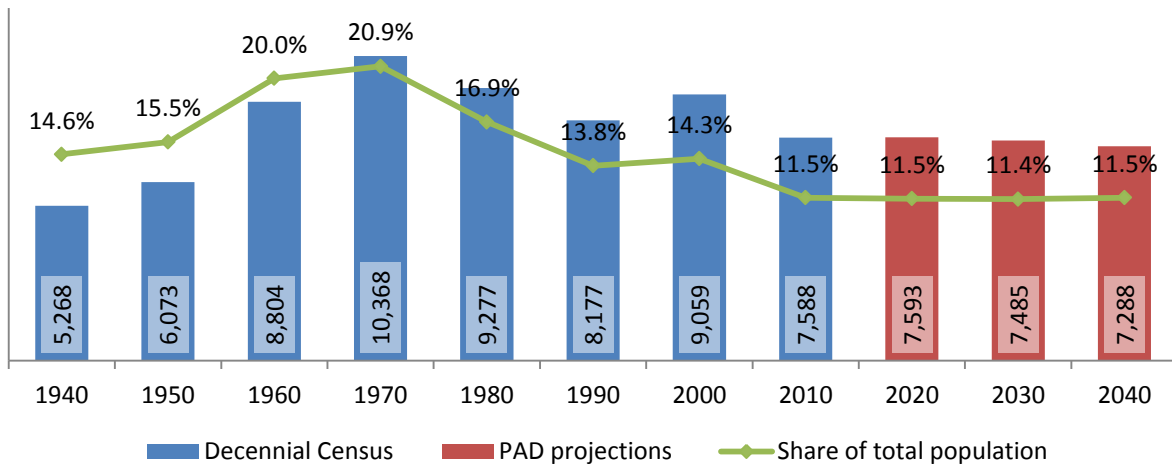
**2040 Population Pyramid, Warren County**



Source: 1950, 1980, 2010 Decennial Census and projections by Cornell Program on Applied Demographics

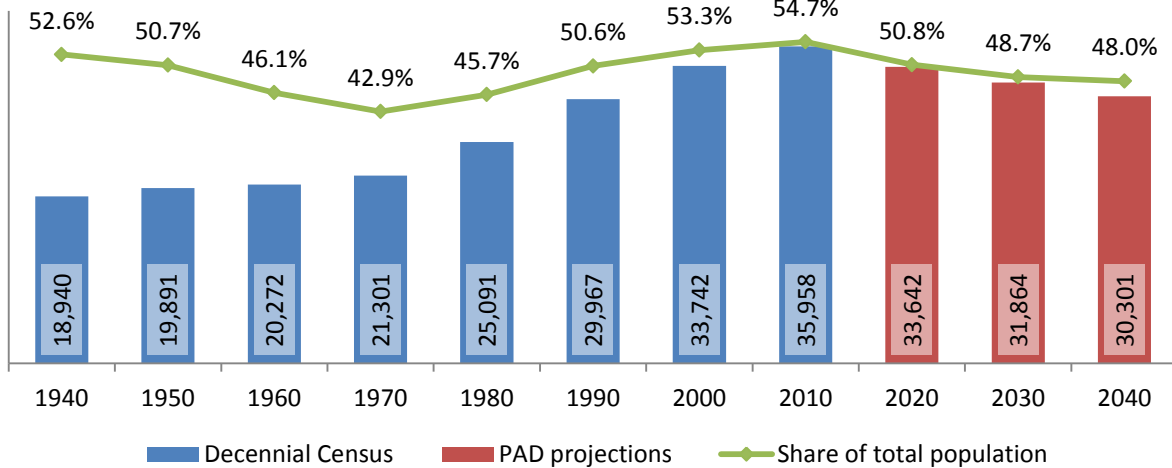
## 4.2 Selected age groups

**Population age 5-14, Warren County, 1940-2040**

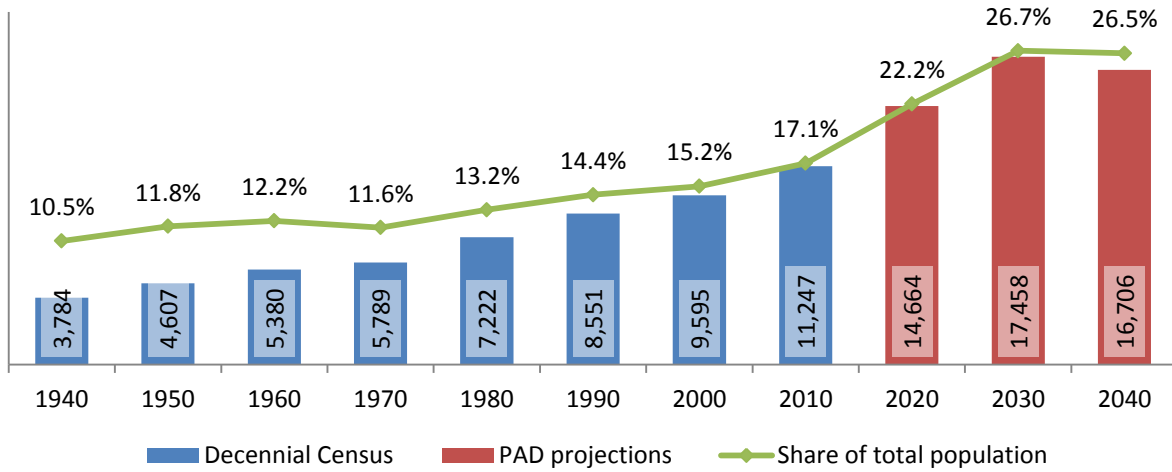


Source: 1940-2010 Decennial Census and projections by Cornell Program on Applied Demographics

**Population age 25-64, Warren County, 1940-2040**



Source: 1940-2010 Decennial Census and projections by Cornell Program on Applied Demographics

**Population age 65 and over, Warren County, 1940-2040**

Source: 1940-2010 Decennial Census and projections by Cornell Program on Applied Demographics

### 4.3 Median age: comparison between areas

	Median Age
New York State	38.0
Warren County	44.1

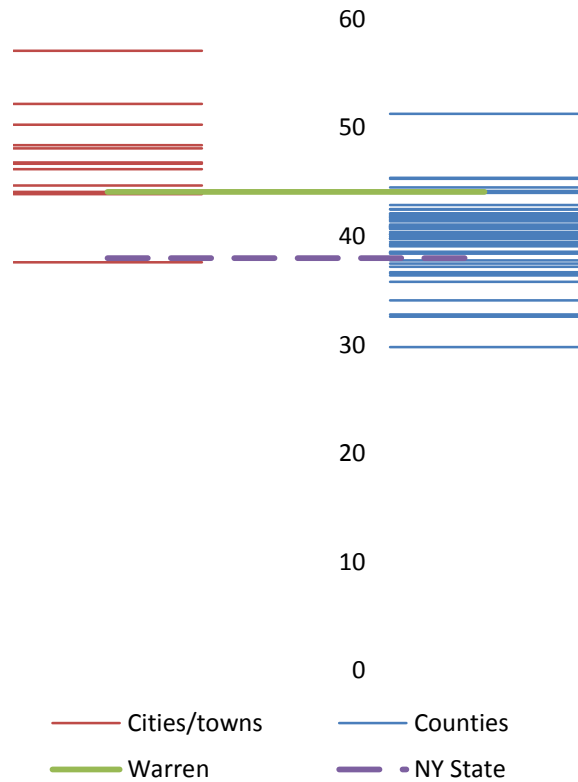
#### Cities

Glens Falls city	37.6
------------------	------

#### Towns

Bolton town	52.2
Chester town	48.1
Hague town	57.1
Horicon town	50.3
Johnsburg town	46.8
Lake George town	46.7
Lake Luzerne town	44.1
Queensbury town	44.7
Stony Creek town	48.4
Thurman town	46.2
Warrensburg town	43.9

Median age comparison  
within county (left) and  
between counties (right)



Source: 2010 Decennial Census

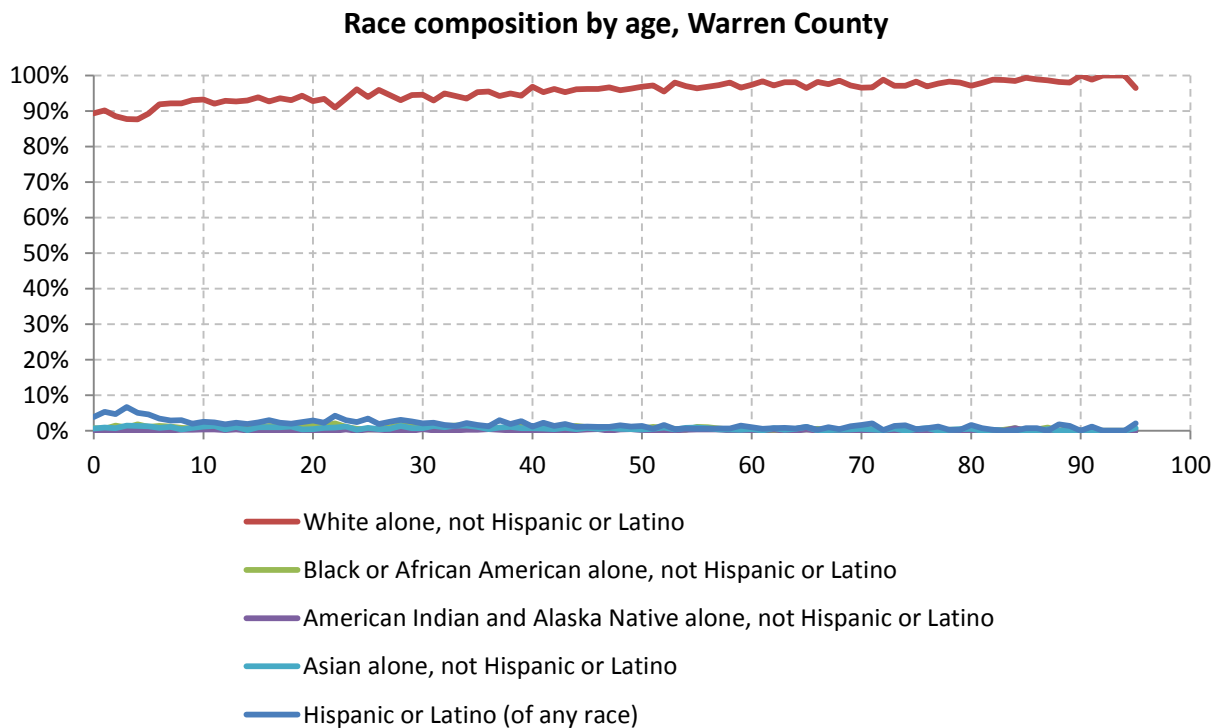
## 5 Race

### 5.1 Total and household population by race

	Total		In households		In Group Quarters
	Count	Percentage	Count	Percentage	Count
<b>Total population</b>	65,707	100%	64,969	100%	738
Not Hispanic or Latino					
One race					
White	62,585	95.2%	61,956	95.4%	629
Black or African American	556	0.8%	493	0.8%	63
American Indian and Alaska Native	117	0.2%	114	0.2%	3
Asian	449	0.7%	445	0.7%	4
Native Hawaiian and Other Pacific Islander	5	0.0%	-	-	-
Some other race	37	0.1%	-	-	-
Two or more races	780	1.2%	772	1.2%	8
Hispanic or Latino (of any race)	1,178	1.8%	1,148	1.8%	30

Source: 2010 Decennial Census

### 5.2 Race composition by age



Source: 2010 Decennial Census



## 6 Housing units

### 6.1 Characteristics

HOUSING OCCUPANCY	COUNT		PERCENTAGE	
	Estimate	Margin of error	Estimate	Margin of error
<b>Total housing units</b>	38,572	± 149	100.0%	
Occupied housing units	28,392	± 429	73.6%	± 1.1
Vacant housing units	10,180	± 423	26.4%	± 1.1
<b>YEAR STRUCTURE BUILT</b>				
<b>Total housing units</b>	38,572	± 149	100.0%	
Built 2005 or later	1,053	± 156	2.7%	± 0.4
Built 2000 to 2004	2,378	± 259	6.2%	± 0.7
Built 1990 to 1999	4,241	± 416	11.0%	± 1.1
Built 1980 to 1989	5,417	± 431	14.0%	± 1.1
Built 1970 to 1979	5,456	± 438	14.1%	± 1.1
Built 1960 to 1969	3,720	± 371	9.6%	± 1.0
Built 1950 to 1959	3,955	± 351	10.3%	± 0.9
Built 1940 to 1949	2,404	± 257	6.2%	± 0.7
Built 1939 or earlier	9,948	± 442	25.8%	± 1.1
<b>HOUSING TENURE</b>				
<b>Occupied housing units</b>	28,392	± 429	100.0%	
Owner-occupied	19,693	± 380	69.4%	± 1.2
Renter-occupied	8,699	± 408	30.6%	± 1.2
<b>HOUSE HEATING FUEL</b>				
<b>Occupied housing units</b>	28,392	± 429	100.0%	
Utility gas	12,304	± 433	43.3%	± 1.5
Bottled, tank, or LP gas	2,524	± 296	8.9%	± 1.0
Electricity	3,293	± 363	11.6%	± 1.2
Fuel oil, kerosene, etc.	8,168	± 461	28.8%	± 1.6
Coal or coke	118	± 86	0.4%	± 0.3
Wood	1,571	± 179	5.5%	± 0.6
Solar energy	29	± 37	0.1%	± 0.1
Other fuel	344	± 121	1.2%	± 0.4
No fuel used	41	± 30	0.1%	± 0.1
<b>VALUE</b>				
<b>Owner-occupied units</b>	19,693	± 380	100.0%	
Less than \$50,000	896	± 161	4.5%	± 0.8
\$50,000 to \$99,999	2,144	± 248	10.9%	± 1.3
\$100,000 to \$149,999	3,303	± 320	16.8%	± 1.6
\$150,000 to \$199,999	4,124	± 299	20.9%	± 1.5
\$200,000 to \$299,999	5,273	± 318	26.8%	± 1.5
\$300,000 to \$499,999	2,743	± 260	13.9%	± 1.3
\$500,000 to \$999,999	849	± 133	4.3%	± 0.7
\$1,000,000 or more	361	± 95	1.8%	± 0.5
Median (dollars)	190,800	± 5,078		

Source: 2007-2011 American Community Survey

## 6.2 Historical data on number of housing units and occupancy status

Year	Number of Housing Units	Change since previous Census	Occupied	Occupancy rate	Vacant
1970	20,879		15,394	73.7%	5,485
1980	26,825	28.5%	19,420	72.4%	7,405
1990	31,737	18.3%	22,559	71.1%	9,178
2000	34,852	9.8%	25,726	73.8%	9,126
2010	38,726	11.1%	27,990	72.3%	10,736

*Source: 1970-2010 Decennial Census*

## 7 Education

### 7.1 Enrollment by level of school

	Estimate	Margin of error
<b>Total enrolled in school</b>	14,428	± 397
Nursery school, preschool	918	± 154
Kindergarten	769	± 156
Elementary: grade 1 to grade 4	2,720	± 264
Elementary: grade 5 to grade 8	3,447	± 303
High school: grade 9 to grade 12	3,418	± 202
College, undergraduate	2,847	± 335
Graduate, professional school	309	± 100

Source: 2007-2011 American Community Survey

### 7.2 Enrollment by age

	Estimate	Margin of error
3 and 4 years	58.8%	± 10.4
5 to 9 years	95.8%	± 2.3
10 to 14 years	99.7%	± 0.4
15 to 17 years	96.8%	± 1.9
18 and 19 years	75.5%	± 6.2
20 to 24 years	30.2%	± 4.9
25 to 34 years	9.5%	± 2.5
35 years and over	1.5%	± 0.4

Source: 2007-2011 American Community Survey

### 7.3 Percentage age 18-24 enrolled in college

	Estimate	Margin of error
Population 18 to 24 years	5,135	± 129
Enrolled in college or graduate school	37.2%	± 4.9
Males 18 to 24 years	2,624	± 58
Enrolled in college or graduate school	36.3%	± 6.6
Females 18 to 24 years	2,511	± 109
Enrolled in college or graduate school	38.1%	± 5.7

Source: 2007-2011 American Community Survey

## 7.4 Educational attainment

	COUNT		PERCENTAGE	
	Estimate	Margin of error	Estimate	Margin of error
<b>Population 25 years and over</b>	46,968	± 136	100%	
<b>EDUCATIONAL ATTAINMENT</b>				
Less than 9th grade	1,161	± 229	2.5%	± 0.5
9th to 12th grade, no diploma	3,267	± 390	7.0%	± 0.8
High school graduate (includes equivalency)	15,400	± 678	32.8%	± 1.5
Some college, no degree	8,589	± 576	18.3%	± 1.2
Associate's degree	5,484	± 458	11.7%	± 1.0
Bachelor's degree	7,586	± 470	16.2%	± 1.0
Graduate or professional degree	5,481	± 430	11.7%	± 0.9
Percent high school graduate or higher			90.6%	± 0.9
Percent bachelor's degree or higher			27.8%	± 1.3

Source: 2007-2011 American Community Survey

## 8 Language spoken at home

	COUNT		PERCENTAGE		SPEAK ENGLISH LESS THAN "VERY WELL"	
	Estimate	Margin of error	Estimate	Margin of error	Estimate	Margin of error
<b>Population 5 years and over</b>	62,464	± 117	100%			
<b>LANGUAGE SPOKEN AT HOME</b>						
English only	59,317	± 461	95.0%	± 0.7		
Language other than English	3,147	± 463	5.0%	± 0.7	757	± 161
Spanish	940	± 225	1.5%	± 0.4	233	± 81
Other Indo-European languages	1,777	± 366	2.8%	± 0.6	360	± 104
Asian and Pacific Islander languages	287	± 108	0.5%	± 0.2	161	± 86
Other languages	143	± 113	0.2%	± 0.2	3	± 5

Source: 2007-2011 American Community Survey

## 9 Labor Force Characteristics

### 9.1 Labor force, employment and unemployment

	TOTAL		IN LABOR FORCE		EMPLOYED		UNEMPLOYMENT RATE	
	Estimate	Margin of error	Estimate	Margin of error	Estimate	Margin of error	Estimate	Margin of error
<b>Population 16 years and over</b>	53,849	± 162	63.5%	± 1.0	59.1%	± 1.1	6.4%	± 0.9
<b>AGE</b>								
16 to 19 years	3,424	± 169	44.5%	± 4.8	35.5%	± 4.6	20.2%	± 6.4
20 to 24 years	3,457	± 97	77.0%	± 4.4	66.4%	± 5.1	13.1%	± 4.4
25 to 44 years	15,486	± 158	86.8%	± 1.9	80.9%	± 2.3	5.6%	± 1.1
45 to 54 years	10,878	± 108	84.3%	± 2.0	80.6%	± 2.2	4.4%	± 1.3
55 to 64 years	9,572	± 82	62.2%	± 2.7	59.4%	± 2.7	4.5%	± 1.6
65 to 74 years	5,779	± 55	21.2%	± 2.8	19.6%	± 2.9	7.4%	± 4.1
75 years and over	5,253	± 40	4.4%	± 1.3	4.1%	± 1.3	6.6%	± 5.6
<b>RACE AND HISPANIC OR LATINO ORIGIN</b>								
One race	53,610	± 189	63.5%	± 1.0	59.1%	± 1.1	6.4%	± 0.9
White	52,325	± 160	63.8%	± 1.0	59.5%	± 1.0	6.2%	± 0.8
Black or African American	472	± 56	44.3%	± 19.9	40.7%	± 19.5	8.1%	± 9.7
American Indian and Alaska Native	189	± 61	60.3%	± 17.9	51.3%	± 16.6	14.9%	± 17.8
Asian	407	± 75	54.8%	± 18.2	39.6%	± 18.7	22.6%	± 27.5
Pacific Islander	14	± 15	100.0%	± 79.3	100.0%	± 79.3	0.0%	± 79.3
Some other race	203	± 107	59.1%	± 22.1	53.2%	± 21.3	10.0%	± 12.5
Two or more races	239	± 101	64.9%	± 16.1	59.0%	± 16.4	9.0%	± 10.7
Hispanic or Latino origin (of any race)	810	± 54	71.4%	± 9.9	63.0%	± 9.1	11.8%	± 7.9
White alone, not Hispanic or Latino	51,726	± 138	63.7%	± 1.0	59.5%	± 1.0	6.2%	± 0.8
<b>SEX</b>								
<b>Population 20 to 64 years</b>	39,393	± 125	79.3%	± 1.2	74.3%	± 1.3	5.7%	± 0.9
Male	19,368	± 98	83.2%	± 1.5	77.3%	± 1.8	6.1%	± 1.3
Female	20,025	± 106	75.4%	± 1.6	71.4%	± 1.7	5.3%	± 1.1
With own children under 6 years	2,391	± 230	74.9%	± 6.4	69.2%	± 7.2	7.6%	± 4.6
<b>EDUCATIONAL ATTAINMENT</b>								
<b>Population 25 to 64 years</b>	35,936	± 138	79.5%	± 1.2	75.1%	± 1.3	5.0%	± 0.8
Less than high school graduate	2,766	± 367	64.6%	± 6.6	58.0%	± 7.0	10.2%	± 5.2
High school graduate (includes equivalency)	11,098	± 601	75.4%	± 2.2	70.9%	± 2.4	5.5%	± 1.5
Some college or associate's degree	11,601	± 594	81.9%	± 2.6	77.7%	± 2.8	4.4%	± 1.3
Bachelor's degree or higher	10,471	± 567	85.0%	± 2.0	81.2%	± 2.2	4.0%	± 1.4

Table formula: **LABOR FORCE** = # EMPLOYED + # UNEMPLOYED  
**% IN LABOR FORCE** = LABOR FORCE / TOTAL \* 100%  
**% EMPLOYED** = # EMPLOYED / TOTAL \* 100%  
**UNEMPLOYMENT RATE** = # UNEMPLOYED / LABOR FORCE \* 100%

Source: 2007-2011 American Community Survey

## 9.2 Annual unemployment rate

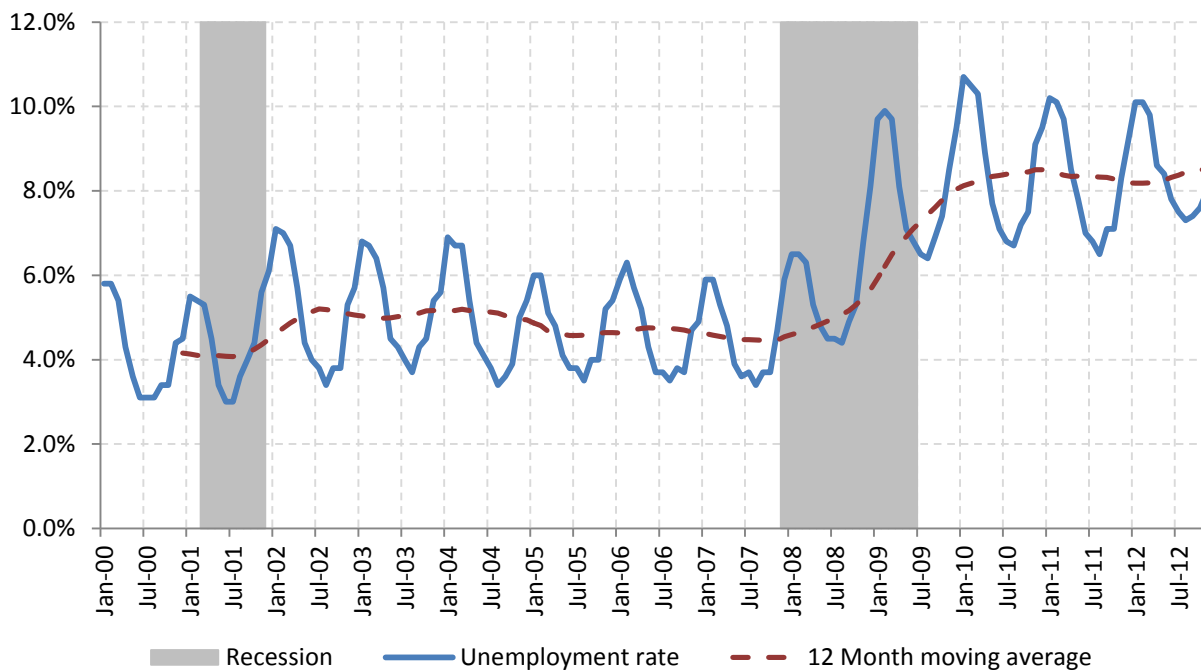
Annual unemployment rate, Warren County and New York State



Source: Bureau Labor Statistics (BLS)

## 9.3 Monthly unemployment rate

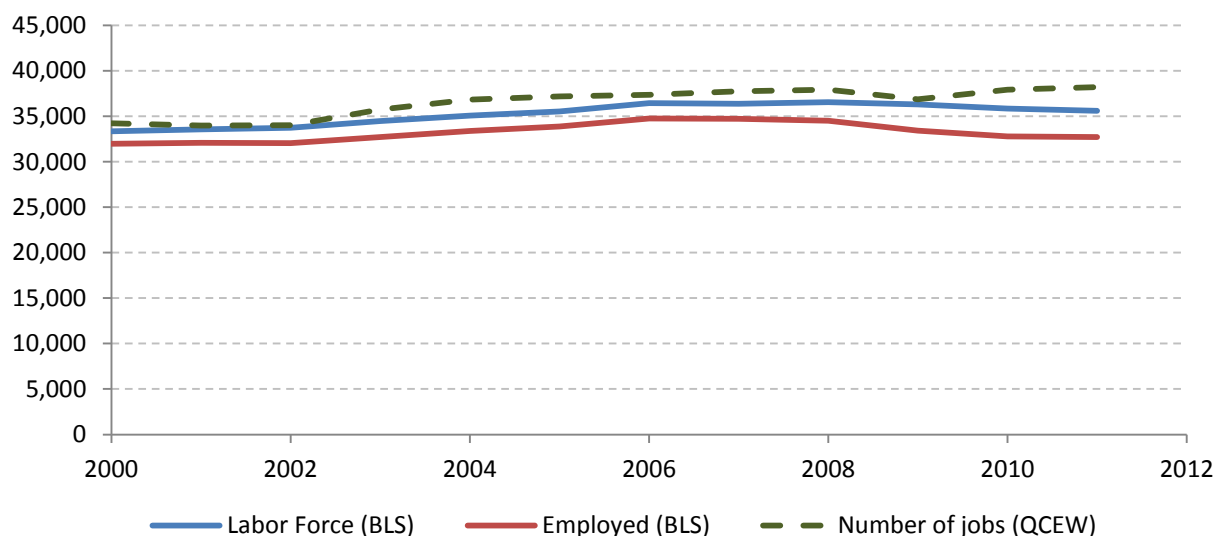
Monthly unemployment rate, Warren County



Source: Bureau Labor Statistics (BLS)

## 9.4 Employment and number of jobs

**Labor force, number of employed workers and number of jobs  
Warren County**



Source: Bureau Labor Statistics (BLS) and NY Department of Labor - Quarterly Census of Employment and Wages (QCEW) – annual averages

## 9.5 Class of worker

					Median earnings (\$)		
		Total	%Male	%Female	Total	Male	Female
Civilian employed population 16 years and over	Estimate	31,844	51.3%	48.7%	32,367	40,505	26,727
	Margin of error	± 576	± 0.8	± 0.8	± 838	± 1,466	± 1,177
Private for-profit wage and salary workers:	Estimate	21,004	54.3%	45.7%	31,015	39,169	24,680
	Margin of error	± 686	± 1.6	± 1.6	± 931	± 2,292	± 1,394
Employee of private company workers	Estimate	19,731	52.8%	47.2%	30,400	38,015	24,668
	Margin of error	± 709	± 1.7	± 1.7	± 1,057	± 2,187	± 1,404
Self-employed in own incorporated business workers	Estimate	1,273	77.5%	22.5%	44,761	53,036	25,893
	Margin of error	± 218	± 5.3	± 5.3	± 9,417	± 9,272	± 18,982
Private not-for-profit wage and salary workers	Estimate	3,151	29.9%	70.1%	33,465	37,311	31,312
	Margin of error	± 319	± 5.3	± 5.3	± 4,413	± 7,865	± 3,156
Local government workers	Estimate	2,942	39.2%	60.8%	39,763	52,688	32,171
	Margin of error	± 311	± 5.1	± 5.1	± 2,851	± 5,420	± 2,530
State government workers	Estimate	1,877	52.1%	47.9%	51,434	55,369	39,531
	Margin of error	± 278	± 7.4	± 7.4	± 8,008	± 5,379	± 6,338
Federal government workers	Estimate	356	53.7%	46.3%	53,125	39,191	61,458
	Margin of error	± 115	± 12.6	± 12.6	± 17,049	± 25,494	± 17,226
Self-employed in own not incorporated business workers and unpaid family workers	Estimate	2,514	66.3%	33.7%	27,284	31,943	15,538
	Margin of error	± 306	± 5.5	± 5.5	± 4,039	± 2,357	± 2,533

Source: 2007-2011 American Community Survey

## 9.6 Jobs by industry sector

	Warren County			NY state
	2011	Change since 2006	% of total	% of total
<b>All NAICS Sectors</b>	37,782	0.1%	100.0%	100.0%
Agriculture, Forestry, Fishing and Hunting	66	-10.8%	0.2%	0.3%
Mining, Quarrying, and Oil and Gas Extraction	218	-8.0%	0.6%	0.1%
Utilities	249	-9.8%	0.7%	0.5%
Construction	1,191	-19.0%	3.2%	3.5%
Manufacturing	3,645	-9.8%	9.6%	5.5%
Wholesale Trade	718	-11.5%	1.9%	4.0%
Retail Trade	5,065	-5.9%	13.4%	10.5%
Transportation and Warehousing	468	-6.2%	1.2%	3.4%
Information	806	2.9%	2.1%	3.3%
Finance and Insurance	1,379	-8.5%	3.6%	6.0%
Real Estate and Rental and Leasing	322	-15.7%	0.9%	2.3%
Professional, Scientific, and Technical Services	1,232	8.4%	3.3%	6.9%
Management of Companies and Enterprises	447	44.2%	1.2%	1.6%
Administrative and Support and Waste Management and Remediation Services	3,226	80.2%	8.5%	5.2%
Educational Services	2,931	-4.0%	7.8%	10.8%
Health Care and Social Assistance	6,851	1.9%	18.1%	17.0%
Arts, Entertainment, and Recreation	876	-25.3%	2.3%	1.9%
Accommodation and Food Services	4,597	-4.1%	12.2%	7.3%
Other Services (except Public Administration)	1,516	6.2%	4.0%	3.9%
Public Administration	1,983	5.1%	5.2%	5.8%

Source: U.S. Census Bureau - Public Use Quarterly Workforce Indicators (QWI) – annual averages

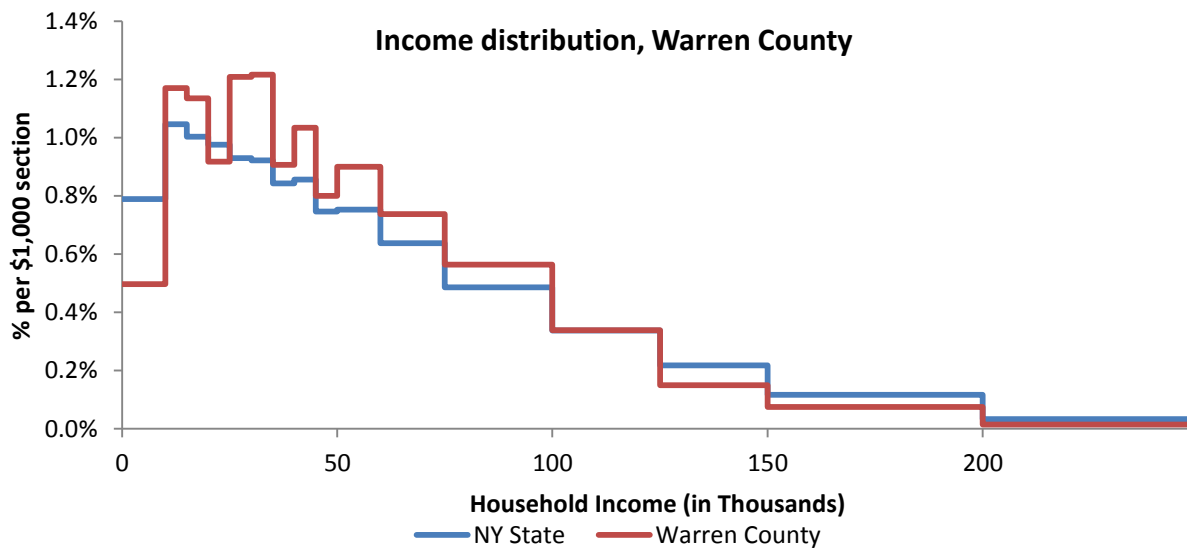


## 10 Household Income

### 10.1 Distribution

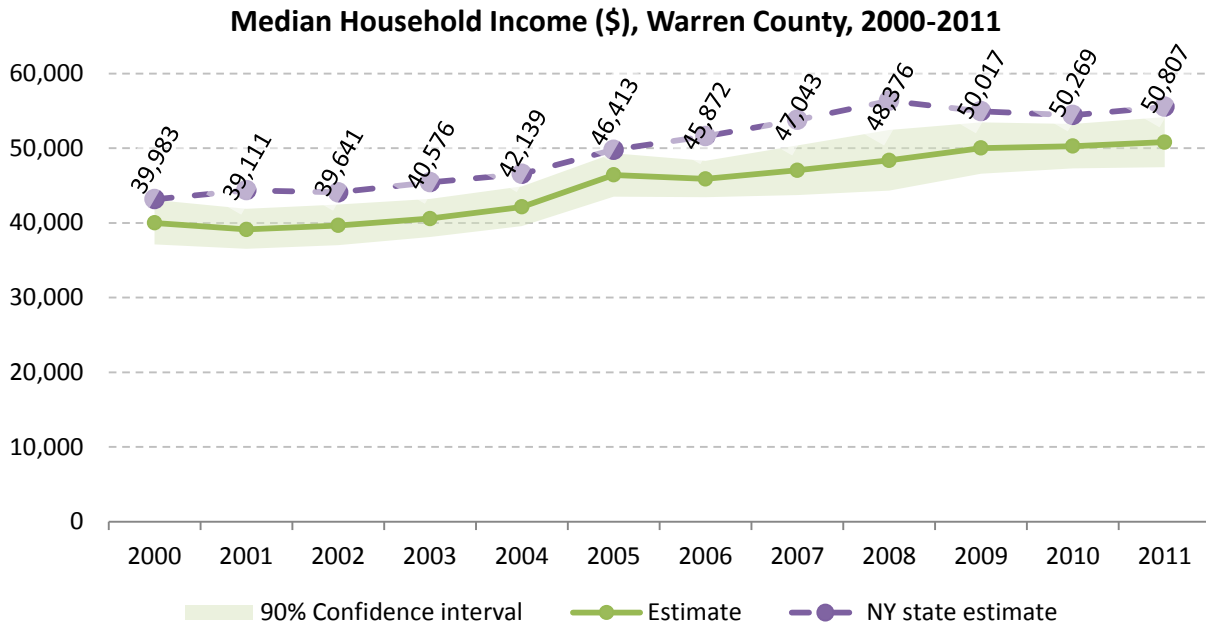
	Estimate	Margin of error	Interval width (in \$1,000)	Est. per \$1,000 section
<b>Total:</b>	28,392	± 429		
Less than \$10,000	1,410	± 245	10	141.0
\$10,000 to \$14,999	1,661	± 257	5	332.2
\$15,000 to \$19,999	1,611	± 232	5	322.2
\$20,000 to \$24,999	1,302	± 222	5	260.4
\$25,000 to \$29,999	1,715	± 229	5	343.0
\$30,000 to \$34,999	1,727	± 245	5	345.4
\$35,000 to \$39,999	1,287	± 229	5	257.4
\$40,000 to \$44,999	1,467	± 243	5	293.4
\$45,000 to \$49,999	1,135	± 154	5	227.0
\$50,000 to \$59,999	2,554	± 282	10	255.4
\$60,000 to \$74,999	3,141	± 359	15	209.4
\$75,000 to \$99,999	4,000	± 365	25	160.0
\$100,000 to \$124,999	2,404	± 264	25	96.2
\$125,000 to \$149,999	1,062	± 173	25	42.5
\$150,000 to \$199,999	1,060	± 198	50	21.2
\$200,000 or more	856	± 162	-	-

Source: 2007-2011 American Community Survey



Source: 2007-2011 American Community Survey

## 10.2 Median household income: Trends over time

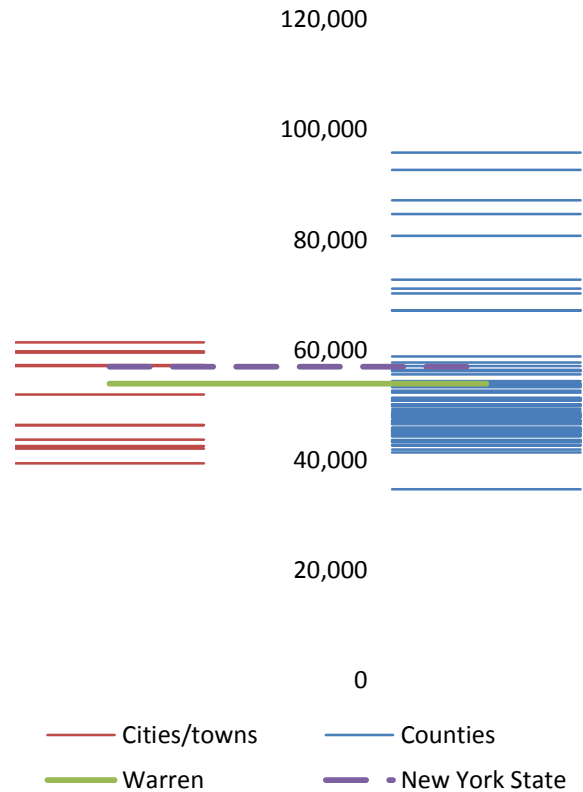


Source: Small Area Income and Poverty Estimates (SAIPE)

### 10.3 Median household income: Comparison between areas

MEDIAN HOUSEHOLD INCOME (\$)		
	Estimate	Margin of error
New York State	56,951	± 190
Warren County	53,877	± 1,666
<b>Cities</b>		
Glens Falls	43,704	± 2,762
<b>Towns</b>		
Bolton	59,515	± 4,836
Chester	46,406	± 13,689
Hague	59,750	± 7,954
Horicon	51,912	± 5,704
Johnsburg	39,423	± 8,579
Lake George	57,083	± 5,520
Lake Luzerne	57,260	± 11,137
Queensbury	61,412	± 2,909
Stony Creek	42,578	± 9,086
Thurman	46,369	± 6,817
Warrensburg	42,099	± 8,596

Median household income comparison  
within county (left) and between  
counties (right)



Source: 2007-2011 American Community Survey

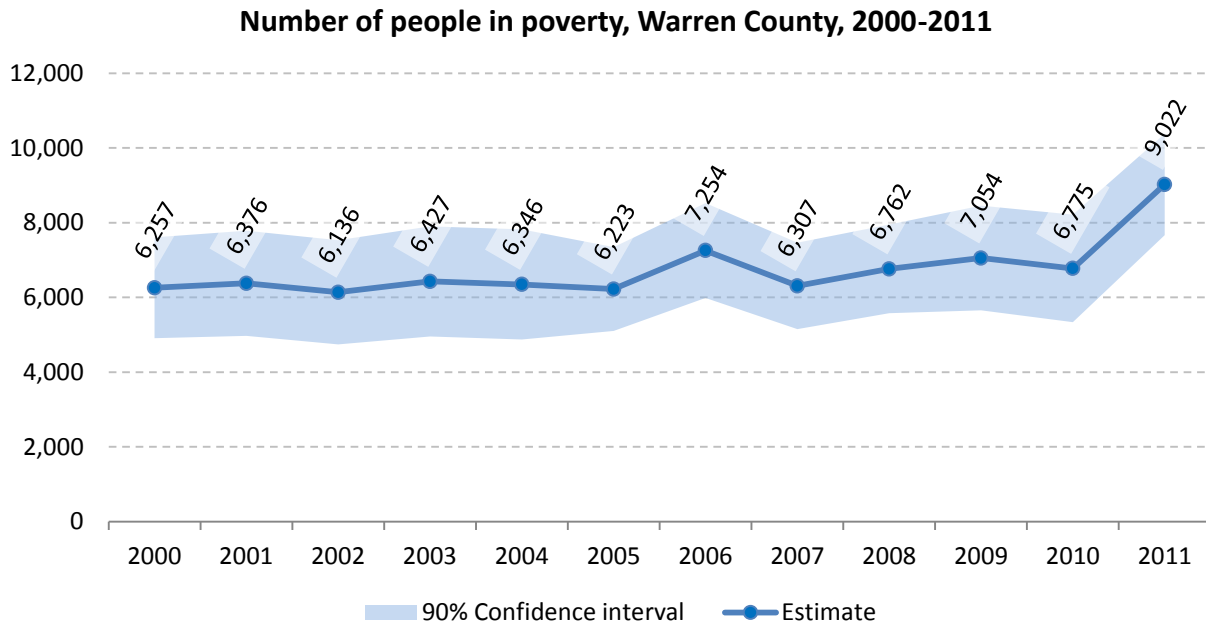
## 11 Poverty

### 11.1 Poverty characteristics

	TOTAL		BELOW POVERTY LEVEL		PERCENT BELOW POVERTY LEVEL	
	Estimate	Margin of error	Estimate	Margin of error	Estimate	Margin of error
<b>Population for whom poverty status is determined</b>	64,330	± 321	6,882	± 820	10.7%	± 1.3
<b>AGE</b>						
Under 18 years	13,521	± 100	1,954	± 429	14.5%	± 3.2
Related children under 18 years	13,465	± 112	1,898	± 437	14.1%	± 3.2
18 to 64 years	40,116	± 276	4,364	± 501	10.9%	± 1.2
65 years and over	10,693	± 140	564	± 154	5.3%	± 1.4
<b>SEX</b>						
Male	31,287	± 294	2,854	± 408	9.1%	± 1.3
Female	33,043	± 167	4,028	± 523	12.2%	± 1.6
<b>RACE AND HISPANIC OR LATINO ORIGIN</b>						
One race	63,911	± 376	6,833	± 815	10.7%	± 1.3
White	62,483	± 279	6,383	± 790	10.2%	± 1.3
Black or African American	524	± 125	190	± 109	36.3%	± 18.0
American Indian and Alaska Native	241	± 76	120	± 85	49.8%	± 25.0
Asian	428	± 102	81	± 88	18.9%	± 19.9
Hispanic or Latino origin (of any race)	1,148	± 37	141	± 103	12.3%	± 9.0
White alone, not Hispanic or Latino	61,544	± 258	6,289	± 768	10.2%	± 1.2
<b>EDUCATIONAL ATTAINMENT</b>						
<b>Population 25 years and over</b>	46,391	± 226	4,114	± 446	8.9%	± 1.0
Less than high school graduate	4,265	± 408	997	± 223	23.4%	± 5.0
High school graduate (includes equivalency)	15,173	± 680	1,307	± 235	8.6%	± 1.5
Some college, associate's degree	13,950	± 681	1,317	± 276	9.4%	± 2.0
Bachelor's degree or higher	13,003	± 608	493	± 117	3.8%	± 0.9
<b>EMPLOYMENT STATUS</b>						
<b>Civilian labor force 16 years and over</b>	33,902	± 559	2,325	± 335	6.9%	± 1.0
Employed	31,763	± 574	1,778	± 326	5.6%	± 1.0
Male	16,262	± 394	690	± 182	4.2%	± 1.1
Female	15,501	± 391	1,088	± 265	7.0%	± 1.7
Unemployed	2,139	± 306	547	± 173	25.6%	± 7.2
Male	1,238	± 251	349	± 145	28.2%	± 9.6
Female	901	± 180	198	± 93	22.0%	± 9.4
<b>WORK EXPERIENCE IN THE PAST 12 MONTHS</b>						
<b>Population 16 years and over</b>	52,554	± 343	5,115	± 517	9.7%	± 1.0
Worked full-time, year-round	21,295	± 635	406	± 120	1.9%	± 0.6
Worked part-time or part-year	14,814	± 608	2,148	± 360	14.5%	± 2.3
Did not work	16,445	± 505	2,561	± 268	15.6%	± 1.5

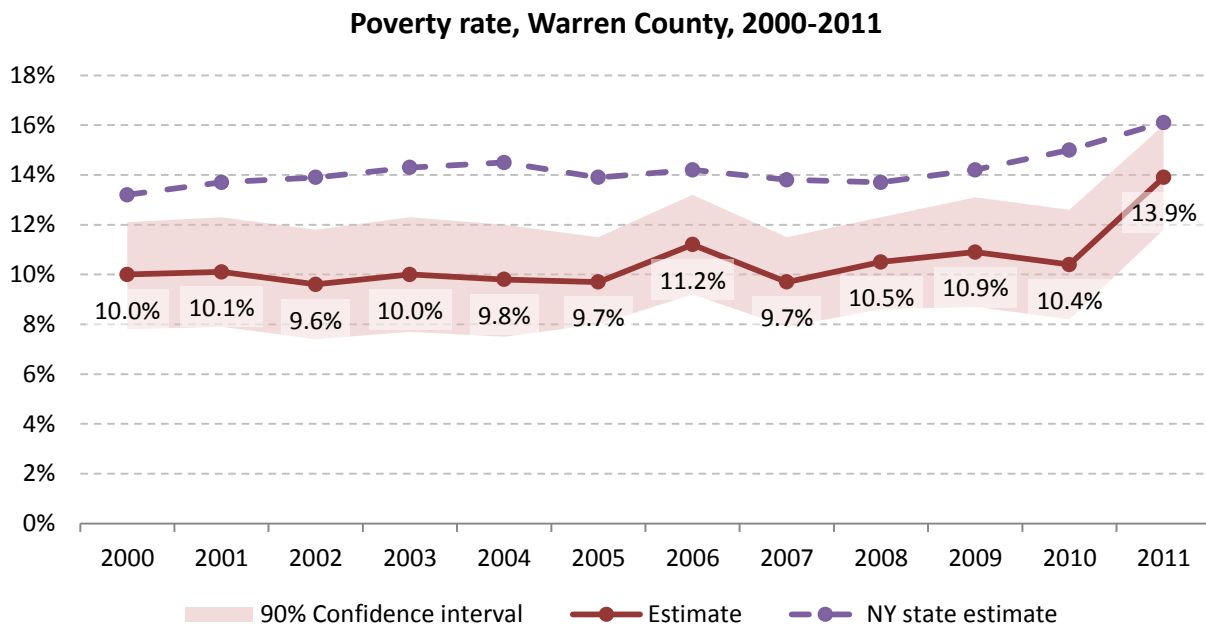
Source: 2007-2011 American Community Survey

## 11.2 Poverty: Trends over time: Count



Source: Small Area Income and Poverty Estimates (SAIPE)

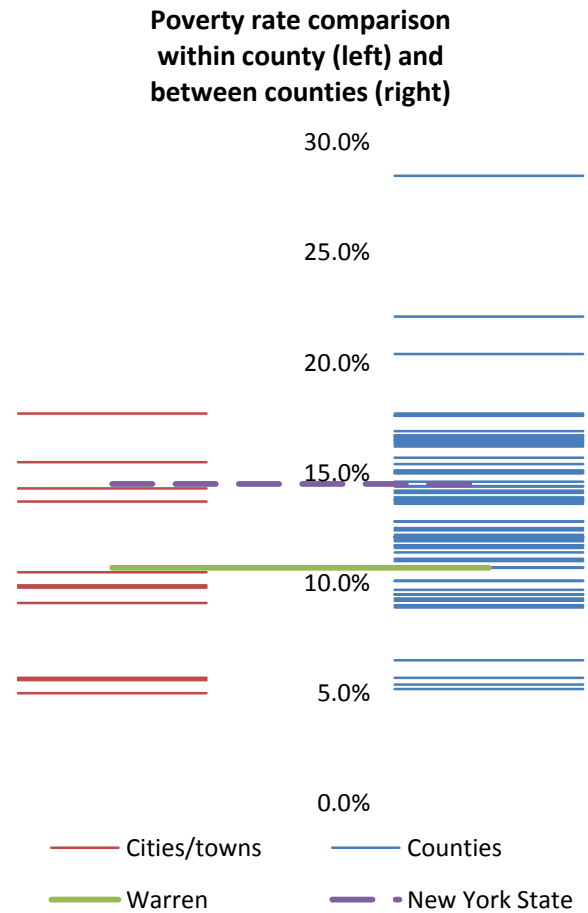
## 11.3 Poverty: Trends over time: Rate



Source: Small Area Income and Poverty Estimates (SAIPE)

## 11.4 Poverty rate: comparison between areas

Poverty Rate - All people		
	Estimate	Margin of error
New York State	14.5%	± 0.1
Warren County	10.7%	± 1.3
<b>Cities</b>		
Glens Falls	14.3%	± 2.8
<b>Towns</b>		
Bolton	5.0%	± 2.9
Chester	15.5%	± 9.3
Hague	9.8%	± 4.6
Horicon	9.8%	± 5.2
Johnsburg	10.5%	± 5.5
Lake George	5.7%	± 2.3
Lake Luzerne	5.6%	± 2.7
Queensbury	9.1%	± 1.9
Stony Creek	13.7%	± 6.7
Thurman	9.9%	± 5.4
Warrensburg	17.7%	± 7.4

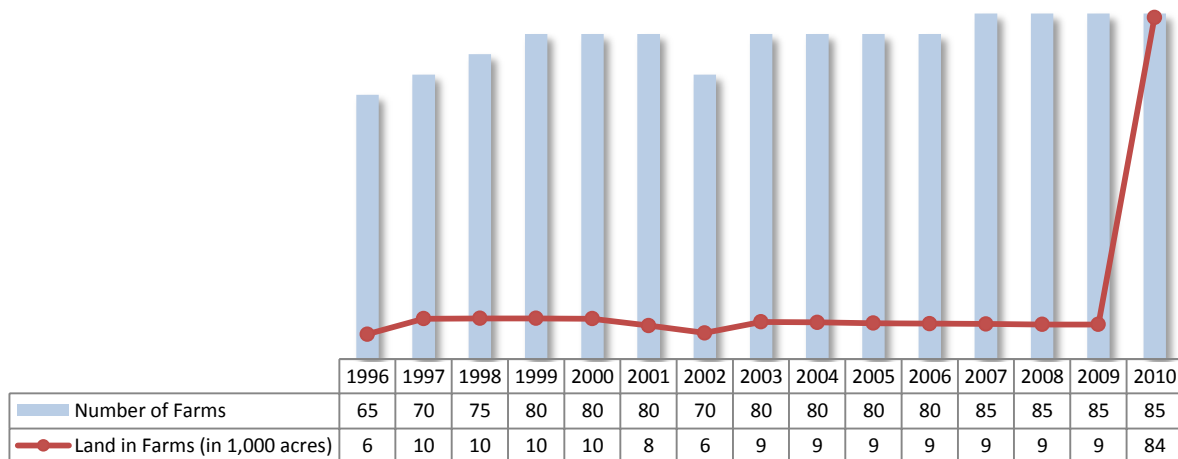


Source: 2007-2011 American Community Survey

## 12 Agriculture

### 12.1 Number of farms and land in farms

Warren County, 1996-2010



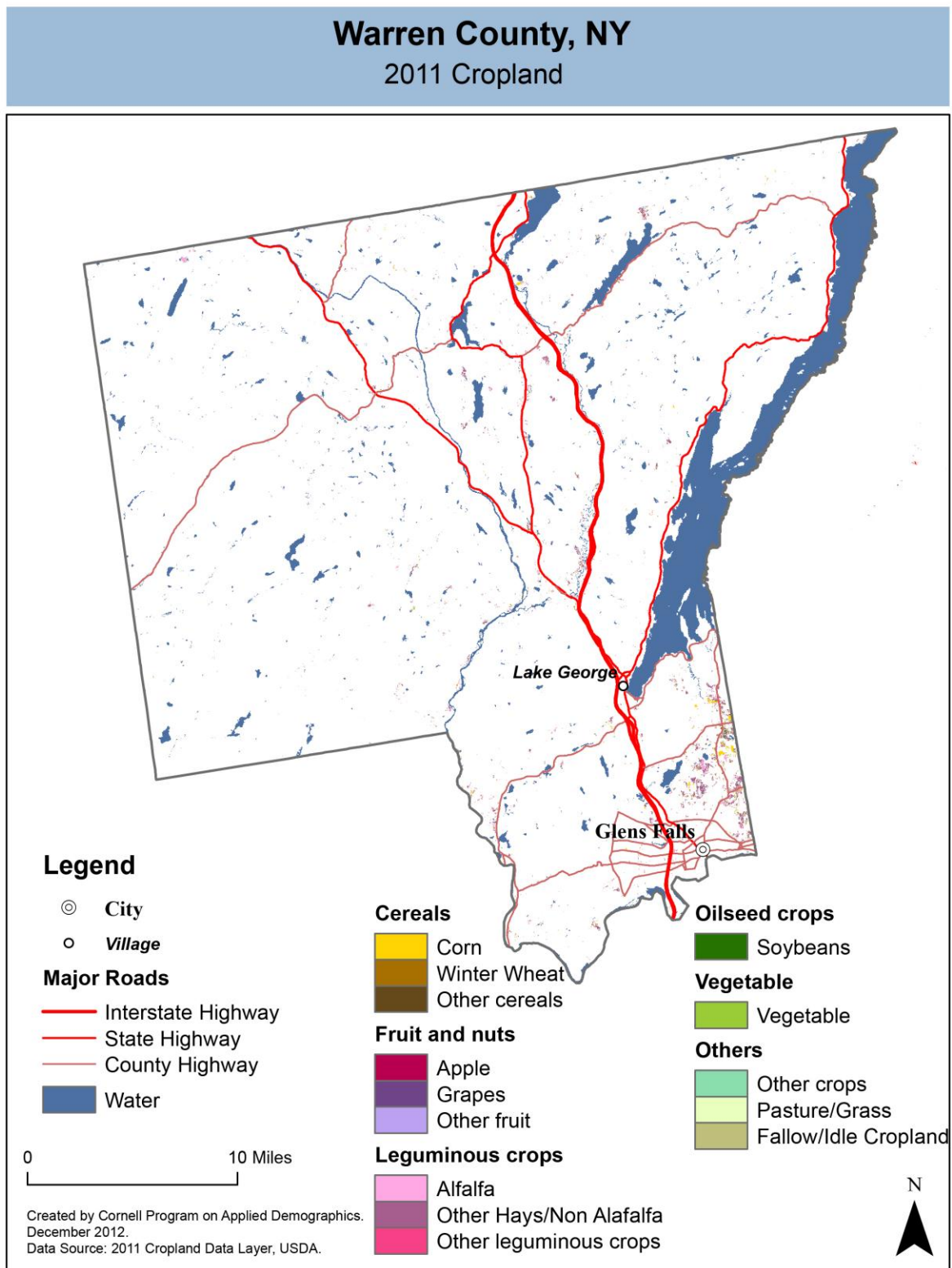
Source: National Agricultural Statistics Service – Annual Statistical bulletin

### 12.2 Farm Operator Characteristics

	Principal Operator		
	Total	Male	Female
<b>Number of farms</b>	86	74	12
Average size of farm (acres)	99	110	33
PRIMARY OCCUPATION			
Farming	32	-	-
Other	54	-	-
AGE			
Under 45	13	-	-
45 to 64 years	52	-	-
65 years and over	21	-	-
Average age (years)	57.5	-	-
YEARS ON PRESENT FARM			
Less than 3 years	3	-	-
3 to 4 years	6	-	-
5 to 9 years	17	-	-
10 years or more	60	-	-

Source: 2007 Agricultural Census

## 12.3 Map of type of crop



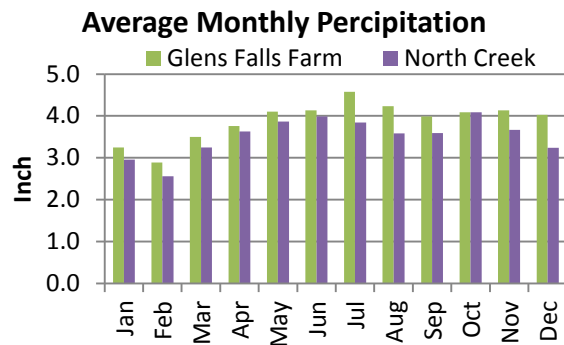
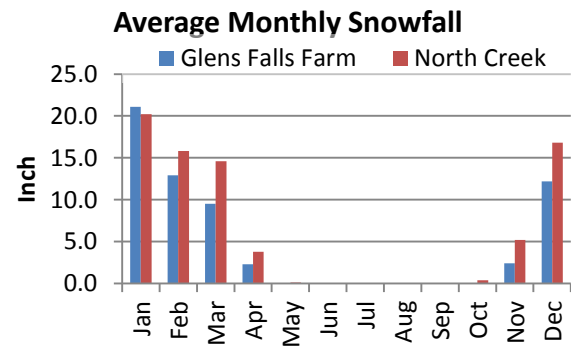
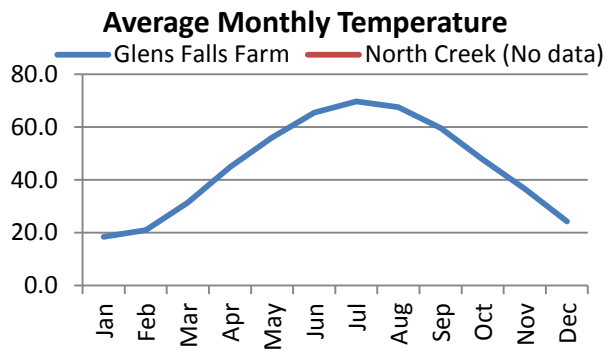
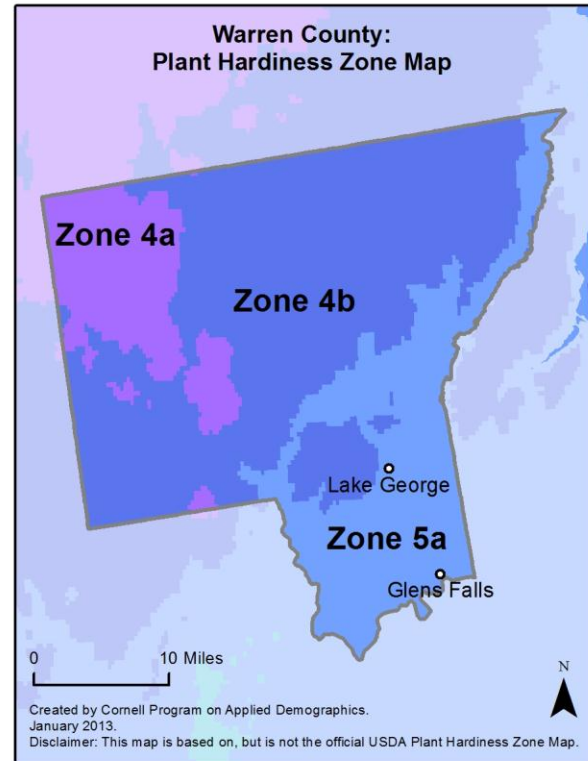
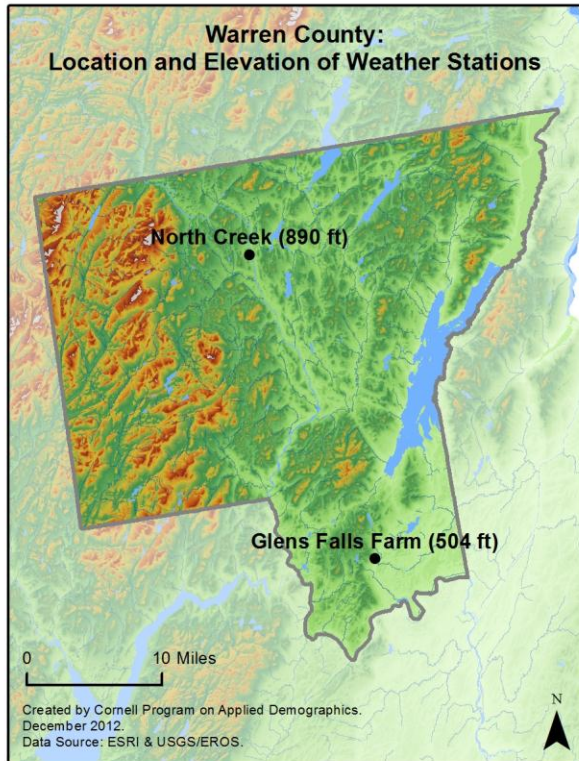


## 12.4 Estimated acreage by crop

	Acreage	%		Acreage	%
<b>Cereals</b>			<b>Fruit and nuts</b>		
Barley	0.2	0.0%	Apples	0.9	0.0%
Corn	540	12.9%	Apricots	-	
Millet	-		Blueberries	-	
Oats	12	0.3%	Cherries	-	
Rye	13	0.3%	Cranberries	-	
Sorghum	-		Grapes	-	
Speltz	-		Nectarines	-	
Spring Wheat	-		Peaches	-	
Sweet Corn	8	0.2%	Plums	-	
Triticale	-		Prunes	-	
Winter Wheat	13	0.3%	Strawberries	-	
Dbl Crop WinWht/Corn	-		Walnuts	-	
<b>Leguminous crops</b>			<b>Beverage and spice crops</b>		
Alfalfa	800	19.1%	Herbs	-	
Other Hay/Non Alfalfa	1,939	46.3%	Peppers	-	
Dry Beans	-		<b>Trees</b>		
Peas	-		Christmas Trees	-	
Vetch	-		Other Tree Crops	-	
<b>Oilseed crops</b>			<b>Other crops</b>		
Soybeans	42	1.0%	Tobacco	-	
Sunflower	-		Misc Veggies & Fruits	-	
<b>Sugar crops</b>			Clover/Wildflowers	1.8	0.0%
Sugarbeets	-		Sod/Grass Seed	-	
<b>Root/tuber crops with high starch or inulin content</b>			Switchgrass	-	
Potatoes	-		Dbl Crop Soybeans/Oats	-	
<b>Vegetables and melons</b>			Dbl Crop WinWht/Soybeans	-	
Asparagus	-		Other Crops	1.1	0.0%
Broccoli	-		<b>Pasture/Grass</b>	458	10.9%
Cabbage	-		<b>Fallow/Idle Cropland</b>	359	8.6%
Carrots	-				
Eggplants	-				
Onions	-				
Pumpkins	-				
Squash	-				
Tomatoes	0.2	0.0%			
Turnips	-				

Source: National Agricultural Statistics Service - Cropland Data Layer 2011

## 13 Climate



**Average length of freeze-free season**

	Last day of frost	First day of frost	Season length
Glens Falls Farm	May 10	October 3	144
North Creek	Not available		

Source: NOAA, Northeast Regional Climate Center at Cornell University. Averages 1981-2010

## 14 Glossary

**American Community Survey (ACS)** - The American Community Survey is an ongoing survey of the population that provides data every year on a variety of social and economic characteristics—age, sex, race, family and relationships, income and benefits, health insurance, education, veteran status, disabilities, where you work and how you get there, where you live and how much you pay for some essentials. The ACS replaced the information previously gathered by what was known as the “long form” of the decennial censuses. The ACS provides communities, companies and other institutions with current information they need to plan investments and services. Information from the survey generates data that help determine how more than \$400 billion in federal and state funds are distributed each year. Every estimate presented in the American Community Survey, as in other surveys, has an uncertainty associated with it. Often the magnitude of that uncertainty is expressed as the Margin of Error.

**Confidence Interval (CI)** - indication of the degree of uncertainty about a sample estimates. Confidence intervals have been traditionally reported at the 90, 95 and 99 percent levels. A 90 percent confidence interval can be interpreted, for example, roughly as providing 90 percent certainty that the interval defined by the upper and lower bounds contain the true value of the characteristic. If a Margin of Error is given, the lower bound of the confidence interval is equal to the estimate minus the Margin of Error and the upper bound is equal to the estimate plus the Margin of Error. (See further, Margin of Error definition below.)

**County subdivision or Minor Civil Division (MCD)** - The Census Bureau geography for primary administrative units below the county level in New York is collectively referred to as county subdivisions or minor civil divisions. These include towns, cities and Indian Reservations.

**Decennial Census** - the Census of the population and housing taken every 10 years in the United States, at the start of each decade, since 1790.

**Employed** – either “at work” or “with a job, but not at work”.

**Group Quarters Population** - all U.S. residents who live in group living facilities including correctional institutions, juvenile facilities, skilled nursing facilities, college residence halls, military barracks, group homes, and workers' dormitories.

**Household Population** - all U.S. residents who live in housing units such as single family homes, townhouses, apartments, and mobile homes.

**Intercensal Population Estimates** - estimates produced for the years between two decennial censuses when both the beginning and ending populations are known. They are produced once a decade by adjusting the existing time series of postcensal estimates for the entire decade to smooth the transition from one decennial census count to the next. They differ from the postcensal estimates that are released annually because the difference between the April 1 postcensal estimate and April 1 census count for the end of the decade is redistributed across the estimates for that decade. For dates when both postcensal and intercensal estimates are available, intercensal estimates are preferred.

**Labor Force** - consists of people classified as employed or unemployed.

**Margin of Error (MOE)** - a measure of the precision of an estimate at a given level of confidence. The confidence level of a margin of error indicates the likelihood that the difference between the population value (which you

would get if you could measure the whole population instead of a sample) and the estimate is less than or equal to the margin of error. The range from the estimate minus the margin of error to the estimate plus the margin of error is called the confidence interval. All ACS estimates are published with their margins of error at the 90 percent confidence level. Margins of error are useful in assessing the reliability of estimates and whether differences between estimates are significant.

**NAICS** - The North American Industry Classification System or NAICS is used by business and government to classify business establishments according to type of economic activity (process of production).

**Numeric Population Change** - difference between the population of an area at the beginning and end of a time period. It is computed by taking the difference between the population at one point in time (t1) and some future time (t2).

**Percent Population Change** - difference between the population of an area at the beginning and end of a time period, expressed as a percentage of the beginning population. It is computed by dividing the population change (t2 - t1) by t1 and multiplying the result by 100.

**Population Estimates** - The calculated number of people living in an area as of a specified point in time, usually July 1st. The estimated population is calculated using a component of change model that incorporates information on natural increase (births, deaths) and net migration (net domestic migration, net international migration) that has occurred in an area since the latest decennial census. A procedure for estimating the current population using a procedure involving a "base population" value at time t -1, adding to that the births during the interval t-1 to t, subtracting the deaths during that interval t-1 to t, and then adding the net domestic and net international migration that occurred during that interval.

**Population Density** - Total number of people per areal unit like a square mile or square kilometer.

**Population Pyramids** - A graphical way of portraying a population's age and sex composition at a given slice in time. The first horizontal bar, constituting the base of the graph, is the youngest age group (typically 0-4) with the number of males in that age group on the left and the number of females in that age group on the right. On top of that age group is another horizontal bar for the next age group (e.g. 5-9) and so forth with the top bar typically for those aged 75 and over. In a population with lots of births and deaths, the shape typically forms a pyramid with a broad base and a narrow top. It is one of the most basic ways to understand population change over time as well as between different geographic units of a similar status (e.g. counties).

**Postcensal Estimates** - estimates produced for the years after a decennial census when only the beginning population is known. They are produced and revised each year, targeted to July 1 of that year.

**Projection** - estimated population at some future time based on assumptions about births, deaths, migration, and ages.

**Race/Ethnicity** - the Census Bureau collects racial data in accordance with guidelines provided by the U.S. Office of Management and Budget (OMB), and these data are based on self-identification. The racial categories included in the census questionnaire generally reflect a social definition of race recognized in this country and not an attempt to define race biologically, anthropologically, or genetically. In addition, it is recognized that the categories of the race item include racial and national origin or sociocultural groups. People may choose to report more than one race to indicate their racial mixture, such as "American Indian" and "White." People who identify their origin as Hispanic, Latino, or Spanish may be of any race. OMB requires five minimum categories: White, Black or African American, American Indian or Alaska Native, Asian, and Native Hawaiian or Other Pacific

Islander. Hispanics may be classified as white or black. So we generally separate them out as an ethnic group first.

**Unemployed** – Not employed, but actively looking for work and available to accept a job.

**Unemployment rate** – Fraction of the Labor Force that is unemployed.

**Urban Area** – A densely settled area with at least 2,500 people. If the total number of people is less than 50,000 the Census Bureau calls it an Urban Cluster, otherwise an Urbanized Area.

**Vintage** - each year, the U.S. Census Bureau produces and publishes estimates of the population for each state and county, as well as the nation as a whole. These are called “vintages.” In producing these vintages, the Bureau utilizes administrative data from a number of sources to estimate 1) the change in population since the most recent decennial census, and 2) the population for each year since the most recent decennial census. With each annual release of population estimates (vintage), the entire time series of estimates beginning on April 1, 2010 is revised and updated.

## 15 References

Warren County homepage: <http://warrencountyny.gov/>

At Cornell:

- Cornell Cooperative Extensions (CCE)  
Home page: <http://www.cce.cornell.edu>
  - Warren local office: <http://counties.cce.cornell.edu/warren/>
- Program on Applied Demographics (PAD)  
URL: <http://pad.human.cornell.edu/>
- Community and Regional Development Institute (CaRDI)  
URL: <http://devsoc.cals.cornell.edu/cals/devsoc/outreach/cardi/index.cfm>

Data sources and background information:

- U.S. Census Bureau - general
  - QuickFacts: <http://quickfacts.census.gov/qfd/states/36/36113.html>
  - QuickLinks: <http://quickfacts.census.gov/qfd/states/36/36113lk.html>
  - American FactFinder: <http://factfinder2.census.gov>
- U.S. Census Bureau - population
  - Decennial Census
    - Background: <http://2010.census.gov/2010census/>
    - Demographic Profile: [http://factfinder2.census.gov/bkmk/table/1.0/en/DEC/10\\_SF1/SF1DP1/0500000US36113](http://factfinder2.census.gov/bkmk/table/1.0/en/DEC/10_SF1/SF1DP1/0500000US36113)
  - American Community Survey (ACS)
    - Background: <http://www.census.gov/acs/www/>
    - Social Data Profile: [http://factfinder2.census.gov/bkmk/table/1.0/en/ACS/10\\_5YR/DP02/0500000US36113](http://factfinder2.census.gov/bkmk/table/1.0/en/ACS/10_5YR/DP02/0500000US36113)
    - Economic Data Profile: [http://factfinder2.census.gov/bkmk/table/1.0/en/ACS/10\\_5YR/DP03/0500000US36113](http://factfinder2.census.gov/bkmk/table/1.0/en/ACS/10_5YR/DP03/0500000US36113)
    - Housing Data Profile: [http://factfinder2.census.gov/bkmk/table/1.0/en/ACS/10\\_5YR/DP04/0500000US36113](http://factfinder2.census.gov/bkmk/table/1.0/en/ACS/10_5YR/DP04/0500000US36113)
    - Demographics Data Profile: [http://factfinder2.census.gov/bkmk/table/1.0/en/ACS/10\\_5YR/DP05/0500000US36113](http://factfinder2.census.gov/bkmk/table/1.0/en/ACS/10_5YR/DP05/0500000US36113)
  - Population estimates: <http://www.census.gov/popest/estimates.html>
- U.S. Census Bureau – Small Area Income & Poverty Estimates (SAIPE)
  - <http://www.census.gov/did/www/saipe/>
- U.S. Census Bureau - Public Use Quarterly Workforce Indicators (QWI) – annual averages
  - <http://www2.vrdc.cornell.edu/news/data/qwi-public-use-data/>
- Bureau Labor Statistics (BLS) – Local Area Unemployment Statistics: <http://www.bls.gov/lau/>
- NY Department of Labor -
  - Labor statistics: <http://www.labor.ny.gov/stats/>
  - Quarterly Census of Employment and Wages (QCEW): <http://www.labor.ny.gov/stats/lsqcew.shtm>
- Bureau of Economic Analysis (BEA) – Local Area Personal Income and Employment: <http://bea.gov/iTable/iTable.cfm?ReqID=70&step=1>

- USDA Census of Agriculture
  - 2007
    - Home page: <http://www.agcensus.usda.gov/Publications/2007/index.php>
    - County profile: [http://www.agcensus.usda.gov/Publications/2007/Online\\_Highlights/County\\_Profiles/New\\_York/cp36113.pdf](http://www.agcensus.usda.gov/Publications/2007/Online_Highlights/County_Profiles/New_York/cp36113.pdf)
    - Race, Ethnicity and Gender Profiles: [http://www.agcensus.usda.gov/Publications/2007/Online\\_Highlights/Race\\_Ethnicity\\_and\\_Gender\\_Profiles/New\\_York/cpd36113.pdf](http://www.agcensus.usda.gov/Publications/2007/Online_Highlights/Race_Ethnicity_and_Gender_Profiles/New_York/cpd36113.pdf)
- USDA National Agricultural Statistics Service (NASS)
  - Home page: <http://www.nass.usda.gov/index.asp>
  - New York Statistical Bulletins: [http://www.nass.usda.gov/Statistics\\_by\\_State/New\\_York/Publications/Annual\\_Statistical\\_Bulletin/](http://www.nass.usda.gov/Statistics_by_State/New_York/Publications/Annual_Statistical_Bulletin/)
  - Cropland Data Layer – CropScape: <http://nassgeodata.gmu.edu/CropScape/>
- USDA Agricultural Research Service – Plant Hardness Zone Map: <http://planthardiness.ars.usda.gov/PHZMWeb/>
- NOAA, Northeast Regional Climate Center at Cornell University
  - Home page: <http://www.nrcc.cornell.edu/index.html>

Alternative sites for data retrieval:

- The Nelson A. Rockefeller Institute of Government – New York State Statistical Yearbooks [http://www.rockinst.org/nys\\_statistics/](http://www.rockinst.org/nys_statistics/)
- Headwaters Economics: Economic Profile System – Human Dimensions Toolkit <http://headwaterseconomics.org/tools/eps-hdt>
- National Historical Geographic Information System (NHGIS) <https://www.nhgis.org/>
- Social Explorer <http://www.socialexplorer.com/pub/home/home.aspx>
- Missouri Census Data Center <http://mcdc.missouri.edu/>
- DataFerret <http://dataferrett.census.gov/>
- Investigative Reporters and Editors (IRE) Census project <http://census.ire.org/>